



# POWERGOOD



DC/DC电源模块手册  
电源解决专家

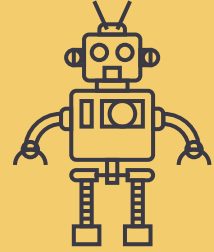


# POWERGOOD 为电源模块而诞生的专家

POWERGOOD创立于1989年，至今已经三十余年，提供客户最优异的品质、专利的拓扑电路、稳定的交期、专业的服务，成为客户最强大的事业后盾及伙伴。POWERGOOD产品线完整，涵盖AC/DC、DC/DC电源模块，提供标准品来满足客户需求，并与终端使用者合作，研发客制化产品，解决客户痛点，成为客户最大的后盾。

## 工业应用电源模块

POWERGOOD的电源模块规格多样化，可应用于各种工业化设备与系统之中，功率从1W-600W，输入电压范围涵盖9-700Vin，符合多国安规认证及EMC认证，除了电源模块以外，更提供弹性的模组化电源(PSU)，快速性客制化服务，紧贴着应用市场的脉动。POWERGOOD不断推陈出新，提供客户最适切的产品，成为工业设备应用领域的领航者。



## 轨道应用电源模块

轨道交通建设已经进入快速发展阶段，在面临更严苛设计及挑战需求之环境下，POWERGOOD的电源模块仍符合高可靠、高耐用的特性，可应用于轨道之中的牵引设备、监控设备、通讯设备、驾驶设备...等系统。POWERGOOD的轨道系列产品工作壳温宽、隔离耐压高，并通过EN50155认证及EN45545-2防火保护认证，是轨道交通应用的最佳解决方案。



## 航天应用电源模块

航天应用除了需要尺寸小、重量轻，以外更需要出色的高功率及高效率，POWERGOOD产品功率密度比为业界最大，可轻松克服并满足客户产品关键设计，创造最佳的竞争优势。POWERGOOD采用金属封装，在EMI表现上极为优异，可节省整体辐射电磁干扰；除此之外，宽的工作壳温范围，让产品在极度低温及超高温环境下，仍然能提供稳定输出，是客户航空航天应用的可靠支持者。



## 医疗应用电源模块

医疗行业需求的电源模块，倾向于小型化及专业可靠。为了因应于医疗设备及加强型隔离系统之严苛应用，POWERGOOD提供医疗用之电源模块为BF等级设计，并且增强绝缘4kV ac，低泄漏电流100uA，适合应用于呼吸器、分析仪等各类医疗机械设备之中。随着新型医疗设备不断涌现，POWERGOOD将因应市场需求，设计出更多符合需求之医疗应用电源模块。



# 品质政策与绿色环境



## 品质管理与绿色环境

POWERGOOD坚守 " 品质至上，客户满意 " 的质量方针，在业界三十多年得到了许多嘉许及认可。对赖以生存环境的守护更是每一位PG人在伴随企业成长中贯彻始终的责任。从碳足迹、水足迹或冲突金属的慎用，再到制程优化包装材料的选择，提供绿色产品保护环境。POWERGOOD通过了国际公认的品质、环境管理系统认证，" 符合法规、减废节能、污染预防、全员参与、持续改善、良好沟通 "。

ISO 9001 品质管理系统  
ISO 14001 环境管理系统



## CE 合格声明

POWERGOOD符合业界要求的安规标准，欧盟低电压指令2014/35/EU以及电磁兼容性指令2014/30/EU。



## RoHS 承认保证

POWERGOOD产品制程皆符合欧盟2011/65/EC以及(EU) 2015/863电子电机设备有害物质限量指令(排除在销售计划中的产品不在此声明中)，限制十大化学物质之使用，并在包装材料与废料处理上遵守欧盟2004/12/EC指令，镉、六价铬、铅、汞的总浓度少于100ppm的标准，将环保理念落实于产品设计、制造、使用、报废及回收，对永续发展提供正面贡献，也为我们下一代保留一个纯净的地球。



## REACH 符合声明书

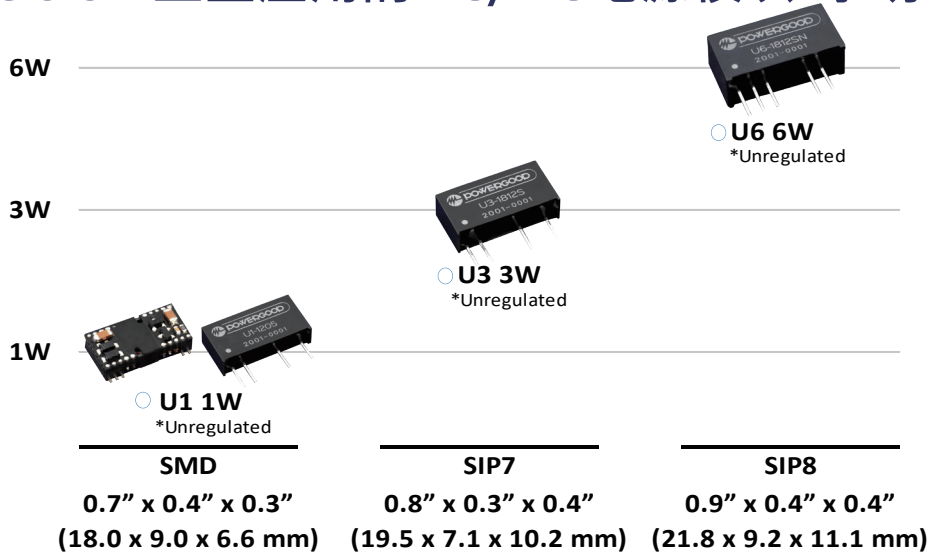
响应改善人类健康以及全球环境维护，POWERGOOD致力于遵守REACH规范 (EC Regulation No.1907/2006, concerning Registration, Evaluation, Authorization and Restriction of Chemicals)。

## 产品安全及可靠度为POWERGOOD核心价值

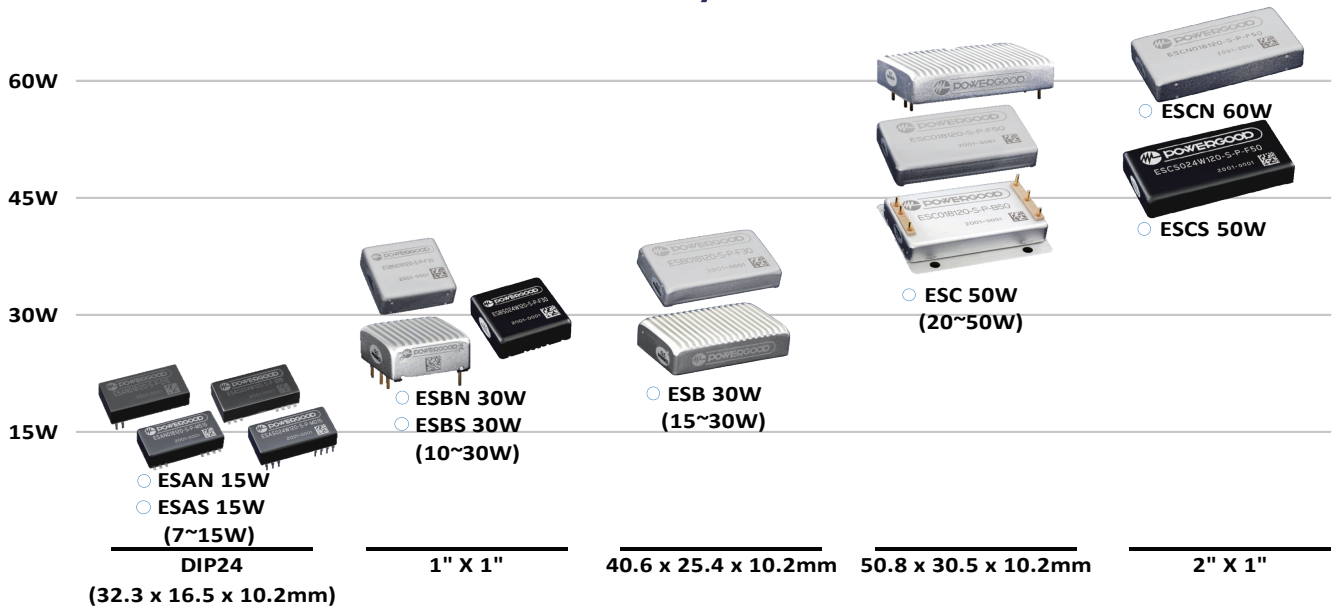
- 欧盟CE国际规范
- 铁道EN 50155 (IEC60571)认证
- 防火保护测试EN 45545-2认证
- UL/IEC/EN 62368-1资讯类国际认证
- EMC standard EN 55011 & EN 55032认证
- MIL-STD-461认证
- UL/IEC/EN 60601-1医疗类安规认证

# DC/DC产品介绍

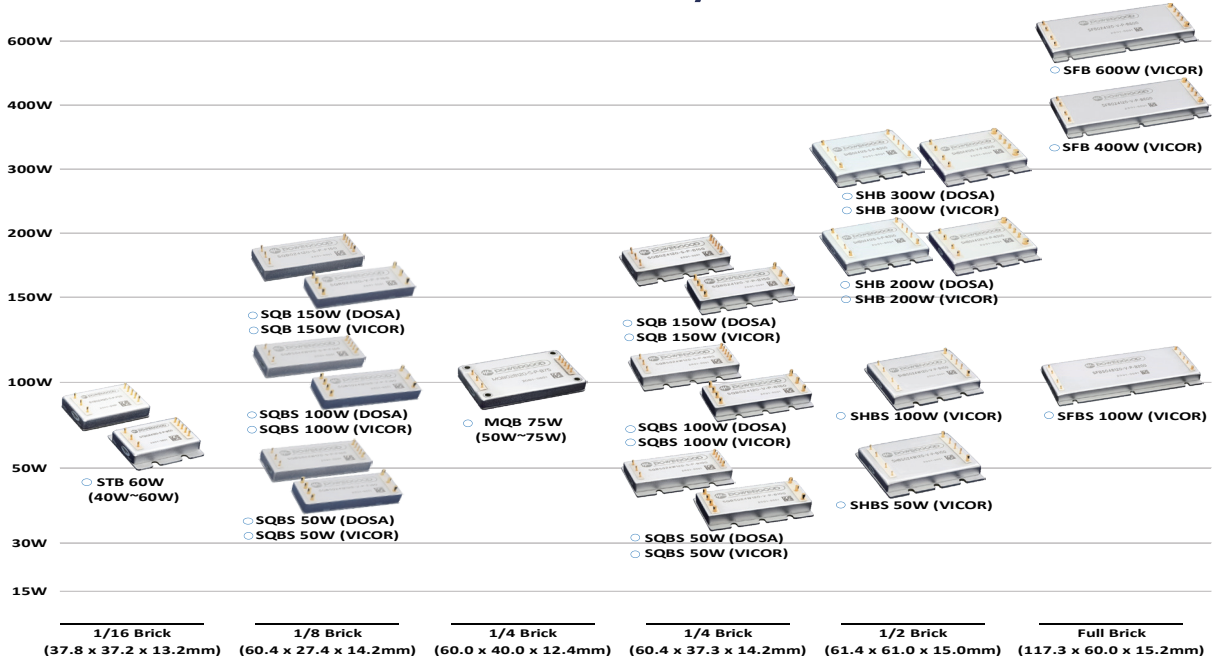
## POWERGOOD工业应用的DC/DC电源模块-小功率非稳压系列



## POWERGOOD工业应用的DC/DC电源模块-封装系列



## POWERGOOD工业应用的DC/DC电源模块-砖类系列







# U系列模块

## 特色

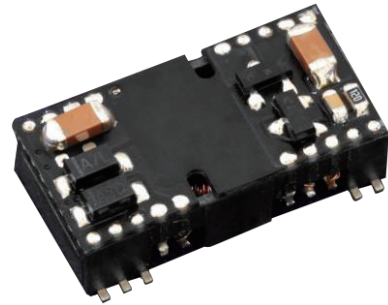
- 隔离式非稳压电源模块
- 包含单 / 双路输出 (视不同型号而定)
- 2200uF高电容性负载
- 超宽工作壳温可达 $-40^{\circ}\text{C}$  to  $+105^{\circ}\text{C}$   
(视不同型号而定)
- 输入到输出隔离4kVDC ( 可选用6kVDC )  
(视不同型号而定)
- 工业用标准引脚
- 参考系列：U1系列、U3系列、U6系列

# DC/DC产品介绍

## DC/DC 电源模块- U 系列

- 隔离式非稳压电源模块
- 无最小负载需求
- 1:1 输入电压
- 2200uF高电容性负载
- 效率高达 82%
- -40°C to +105°C 不降额工作温度
- 超宽工作壳温-40 °C to + 105°C
- 持续性短路保护
- 输入到输出隔离4kVDC ( 可选用6kVDC )

### ● U1



### Model Number Structure

U 1 - 05 A - xx X

Series Name	Output Power	Input Voltage	Output Voltage	Procurement Code	Product Version
Unicorn series	1 : 1 Watt	05 : 5Vdc 12 : 12Vdc 24 : 24Vdc	A : 5Vdc	"xx" can be 0~1 and/or A~Z. Default as "GP".	Blank : Standard H : 6kVdc I/O isolation.

### Model Selection Guide

Typical @ Ta=+25 °C under nominal line voltage conditions unless noted

Model	Input				Output			Efficiency @FL Typ.(%)
	Voltage(V)		Current(mA)		Voltage (V)	Current (mA)	Power (W)	
	Range	Nominal	No load	Full load				
U1-05A-xx	4.5-5.5	5	29	249	5	200	1	80%
U1-12A-xx	10.8-13.2	12	11	101	5	200	1	82%
U1-24A-xx	21.6-26.4	24	8	51	5	200	1	81%

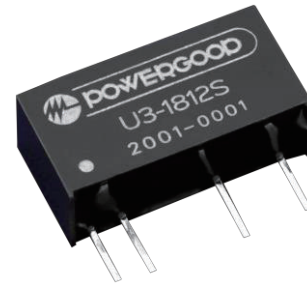


# DC/DC产品介绍

## DC/DC 电源模块- U 系列

- 隔离式非稳压电源模块
- 包含单 / 双路输出
- 3KVdc 隔离电压
- -40°C to +85°C 不降额工作温度
- 宽工作壳温 -40°C to +85°C
- 效率高达 82%
- 内建 LC 滤波器
- 持续性短路保护
- 电容负载高达 2,200uF

### ● U3



### Model Number Structure

<b>U</b>	<b>3</b>	-	<b>18</b>	<b>05</b>	<b>S</b>	<b>U</b>	<b>3</b>
Series Name	Watt		Input Voltage (VDC)	Output Voltage (VDC)	Output Quantity	Series Name	Watt
Unicorn series	3 : 3 Watt		05 : 4.5-5.5 18 : 9-36	05 : 5Vdc 12 : 12Vdc	S: Single D: Dual	Unicorn series	3 : 3 Watt

### Model Selection Guide

Typical @ Ta=+25 °C under nominal line voltage conditions unless noted

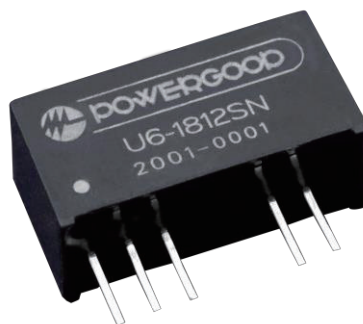
Model	Input		Output			Efficiency @FL
	Voltage(V)	Current(mA)	Voltage	Current	Power	
	Range	Full load	(V)	(mA)	(W)	Typ.(%)
<b>U3-0505S</b>	4.5-5.5	730	5.0	600	3	82%
<b>U3-1805S</b>	9-36	150	5.0	600	3	82%
<b>U3-3605S</b>	18-75	75	5.0	600	3	82%

# DC/DC产品介绍

## DC/DC 电源模块- U 系列

- 隔离式非稳压电源模块
- 包含单 / 双路输出
- 4:1 宽输入电压
- 效率高达 85%
- -40°C to +65°C 不降额工作温度
- 宽工作壳温 -40°C to +100°C
- 持续性短路保护
- 电容负载高达 2,200uF
- 输入到输出隔离 2kVDC ( 可选用 3Kvdc )

### ● U6



### Model Number Structure

U	6	-	18	05	S	N
Series Name	Watt		Input Voltage (VDC)	Output Voltage (VDC)	Output Quantity	Remote Control Option
Unicorn series	6 : 6 Watt		18 : 9-36 36 : 18-75	05 : 5Vdc 12 : 12Vdc 24 : 24Vdc	S: Single D: Dual	N: Negative logic

### Model Selection Guide

Typical @ Ta=+25 °C under nominal line voltage conditions unless noted

Model	Input		Output			Efficiency
	Voltage(V)	Current(mA)	Voltage	Current	Power	@FL
	Range	Full load	(V)	(mA)	(W)	Typ.(%)
U6-1805SN	9-36	0.82	5.0	1200	6	85%
U6-3605SN	18-75	0.41	5.0	1200	6	85%





# 封装类模块

## 特色

- 内建EMI滤波器可通过EN55032 Class A / EN55032 Class B (可选) 无须外部零件(可选，视不同系列而定)
- 包含单 / 双路输出
- 2:1 / 4:1 宽输入电压
- 金属封装设计，散热及EMI佳
- 超宽工作壳温可达:  $-45^{\circ}\text{C}$  to  $+115^{\circ}\text{C}$  (亦提供 $-55^{\circ}\text{C}$  to  $+125^{\circ}\text{C}$ 可选，视不同系列而定)
- 工业用标准引脚
- 参考系列：ESB系列、ESC系列、ESAN系列、ESBN系列、ESCN系、ESAS系列、ESBS系列、ESCS系列

# DC/DC产品介绍

## DC/DC 电源模块- E 系列

### 特色

- 内建EMI滤波器可通过  
EN55032 Class A/  
EN55032 Class B  
无须外部零件(可选)
- 节省多达20%的电路板空间
- 包含单 / 双路输出
- 2:1 / 4:1 宽输入电压
- 6面全金属设计，散热及EMI佳
- 工作壳温:-45°C to +115°C  
(亦提供工作壳温:-55°C to +  
125°C可选)
- 输出电压调整范围-10% , +10%
- 工业标准引脚；完全可替代1 " x1"  
标准封装引脚
- 外壳: F : 平壳 / P : 一字壳 (可选)

### ● ESB



UVLO

OCP

OVP

OTP



# DC/DC产品介绍

## Model Number Structure

**ESB 018 033 - S - P - F 30**

Series Name	Input Voltage (VDC)	Output Voltage (VDC)	Output Quantity	Remote Control Option	Shape	Watt
Evolving Sirius- Bishop series –		<b>033</b> : 3.3				
		<b>050</b> : 5		<b>P</b> : Positive logic		
		<b>120</b> : 12	<b>S</b> : Single	<b>N</b> : Negative logic		
		<b>150</b> : 15			<b>F</b> : Flat	<b>15</b>
		<b>240</b> : 24		<b>1</b> : Positive logic	<b>P</b> : Groove	<b>20</b>
				+ EMC Filter	Cover	<b>25</b>
		<b>050</b> : ±5		<b>0</b> : Negative logic		<b>30</b>
		<b>120</b> : ±12	<b>D</b> : Dual	+ EMC Filter		
		<b>150</b> : ±15				
		<b>240</b> : ±24				

## Model Selection Guide

Typical @ Ta=+25 °C under nominal line voltage conditions unless noted

Model	Input			Output			Efficiency
	Voltage (V)		Current (A)	Voltage	Current	Power	
	Range	Nominal	Full load	(V)	(A)	(W)	Typ.(%)
ESB012033-S-□-□15	9-18	12	1.40	3.3	4.5	15	89%
ESB012050-S-□-□15	9-18	12	1.39	5	3	15	90%
ESB012120-S-□-□15	9-18	12	1.42	12	1.3	15	88%
ESB012150-S-□-□15	9-18	12	1.42	15	1	15	88%
ESB012240-S-□-□15	9-18	12	1.42	24	0.7	15	88%
ESB012120-D-□-□15	9-18	12	1.42	±12	±0.63	15	88%
ESB012150-D-□-□15	9-18	12	1.42	±15	±0.5	15	88%
ESB012240-D-□-□15	9-18	12	1.42	±24	±0.3	15	88%
ESB012033-S-□-□20	9-18	12	1.87	3.3	6	20	89%
ESB012050-S-□-□20	9-18	12	1.85	5	4	20	90%
ESB012120-S-□-□20	9-18	12	1.89	12	1.7	20	88%
ESB012150-S-□-□20	9-18	12	1.89	15	1.3	20	88%
ESB012240-S-□-□20	9-18	12	1.89	24	0.8	20	88%
ESB012120-D-□-□20	9-18	12	1.89	±12	±0.8	20	88%
ESB012150-D-□-□20	9-18	12	1.89	±15	±0.7	20	88%
ESB012240-D-□-□20	9-18	12	1.89	±24	±0.4	20	88%
ESB018033-S-□-□15	9-36	18	0.95	3.3	4.5	15	88%
ESB018050-S-□-□15	9-36	18	0.94	5	3	15	89%
ESB018120-S-□-□15	9-36	18	0.95	12	1.3	15	88%

# DC/DC产品介绍

Typical @ Ta=+25 °C under nominal line voltage conditions unless noted

Model	Input			Output			Efficiency
	Voltage (V)		Current (A)	Voltage	Current	Power	
	Range	Nominal	Full load	(V)	(A)	(W)	Typ.(%)
ESB018150-S-□-□15	9-36	18	0.95	15	1	15	88%
ESB018240-S-□-□15	9-36	18	0.95	24	0.7	15	88%
ESB018120-D-□-□15	9-36	18	0.95	±12	±0.7	15	88%
ESB018150-D-□-□15	9-36	18	0.95	±15	±0.5	15	88%
ESB018240-D-□-□15	9-36	18	0.96	±24	±0.3	15	87%
ESB018033-S-□-□20	9-36	18	1.26	3.3	6	20	88%
ESB018050-S-□-□20	9-36	18	1.25	5	4	20	89%
ESB018120-S-□-□20	9-36	18	1.26	12	1.7	20	88%
ESB018150-S-□-□20	9-36	18	1.26	15	1.3	20	88%
ESB018240-S-□-□20	9-36	18	1.26	24	0.8	20	88%
ESB018120-D-□-□20	9-36	18	1.26	±12	±0.8	20	88%
ESB018150-D-□-□20	9-36	18	1.26	±15	±0.7	20	88%
ESB018240-D-□-□20	9-36	18	1.28	±24	±0.4	20	87%
ESB018033-S-□-□25	9-36	18	1.60	3.3	7.6	25	87%
ESB018050-S-□-□25	9-36	18	1.56	5	5	25	89%
ESB018120-S-□-□25	9-36	18	1.58	12	2.1	25	88%
ESB018150-S-□-□25	9-36	18	1.58	15	1.7	25	88%
ESB018240-S-□-□25	9-36	18	1.58	24	1	25	88%
ESB018120-D-□-□25	9-36	18	1.58	±12	±1.0	25	88%
ESB018150-D-□-□25	9-36	18	1.58	±15	±0.8	25	88%
ESB018240-D-□-□25	9-36	18	1.60	±24	±0.5	25	87%
ESB024033-S-□-□15	18-36	24	0.70	3.3	4.5	15	89%
ESB024050-S-□-□15	18-36	24	0.69	5	3	15	90%
ESB024120-S-□-□15	18-36	24	0.70	12	1.3	15	89%
ESB024150-S-□-□15	18-36	24	0.70	15	1	15	89%
ESB024240-S-□-□15	18-36	24	0.70	24	0.7	15	89%
ESB024120-D-□-□15	18-36	24	0.70	±12	±0.7	15	89%
ESB024150-D-□-□15	18-36	24	0.70	±15	±0.5	15	89%
ESB024240-D-□-□15	18-36	24	0.70	±24	±0.3	15	89%
ESB024033-S-□-□20	18-36	24	0.95	3.3	6	20	88%
ESB024050-S-□-□20	18-36	24	0.94	5	4	20	89%
ESB024120-S-□-□20	18-36	24	0.94	12	1.7	20	89%

# DC/DC产品介绍

Typical @ Ta=+25 °C under nominal line voltage conditions unless noted

Model	Input			Output			Efficiency
	Voltage (V)		Current (A)	Voltage	Current	Power	
	Range	Nominal	Full load	(V)	(A)	(W)	Typ.(%)
ESB024150-S-□-□20	18-36	24	0.94	15	1.3	20	89%
ESB024240-S-□-□20	18-36	24	0.94	24	0.8	20	89%
ESB024120-D-□-□20	18-36	24	0.94	±12	±0.8	20	89%
ESB024150-D-□-□20	18-36	24	0.94	±15	±0.7	20	89%
ESB024240-D-□-□20	18-36	24	0.95	±24	±0.4	20	88%
ESB024033-S-□-□30	18-36	24	1.42	3.3	9.1	30	88%
ESB024050-S-□-□30	18-36	24	1.39	5	6	30	90%
ESB024120-S-□-□30	18-36	24	1.42	12	2.5	30	88%
ESB024150-S-□-□30	18-36	24	1.42	15	2	30	88%
ESB024240-S-□-□30	18-36	24	1.42	24	1.3	30	88%
ESB024120-D-□-□30	18-36	24	1.42	±12	±1.3	30	88%
ESB024150-D-□-□30	18-36	24	1.40	±15	±1.0	30	89%
ESB024240-D-□-□30	18-36	24	1.42	±24	±0.6	30	88%
ESB036033-S-□-□15	18-75	36	0.48	3.3	4.5	15	87%
ESB036050-S-□-□15	18-75	36	0.47	5	3	15	89%
ESB036120-S-□-□15	18-75	36	0.47	12	1.3	15	88%
ESB036150-S-□-□15	18-75	36	0.47	15	1	15	88%
ESB036240-S-□-□15	18-75	36	0.47	24	0.7	15	88%
ESB036120-D-□-□15	18-75	36	0.47	±12	±0.7	15	88%
ESB036150-D-□-□15	18-75	36	0.47	±15	±0.5	15	88%
ESB036240-D-□-□15	18-75	36	0.48	±24	±0.3	15	87%
ESB036033-S-□-□20	18-75	36	0.64	3.3	6	20	87%
ESB036050-S-□-□20	18-75	36	0.62	5	4	20	89%
ESB036120-S-□-□20	18-75	36	0.63	12	1.7	20	88%
ESB036150-S-□-□20	18-75	36	0.63	15	1.3	20	88%
ESB036240-S-□-□20	18-75	36	0.63	24	0.8	20	88%
ESB036120-D-□-□20	18-75	36	0.63	±12	±0.8	20	88%
ESB036150-D-□-□20	18-75	36	0.63	±15	±0.7	20	88%
ESB036240-D-□-□20	18-75	36	0.64	±24	±0.4	20	87%
ESB048033-S-□-□15	36-75	48	0.35	3.3	4.5	15	89%
ESB048050-S-□-□15	36-75	48	0.35	5	3	15	90%



# DC/DC产品介绍

Typical @ Ta=+25 °C under nominal line voltage conditions unless noted

Model	Input			Output			Efficiency
	Voltage (V)		Current (A)	Voltage	Current	Power	
	Range	Nominal	Full load	(V)	(A)	(W)	Typ.(%)
ESB048120-S-□-□15	36-75	48	0.36	12	1.3	15	88%
ESB048150-S-□-□15	36-75	48	0.36	15	1	15	88%
ESB048240-S-□-□15	36-75	48	0.35	24	0.7	15	89%
ESB048120-D-□-□15	36-75	48	0.35	±12	±0.7	15	89%
ESB048150-D-□-□15	36-75	48	0.35	±15	±0.5	15	90%
ESB048240-D-□-□15	36-75	48	0.35	±24	±0.3	15	89%
ESB048033-S-□-□20	36-75	48	0.46	3.3	6	20	90%
ESB048050-S-□-□20	36-75	48	0.46	5	4	20	91%
ESB048120-S-□-□20	36-75	48	0.46	12	1.7	20	90%
ESB048150-S-□-□20	36-75	48	0.46	15	1.3	20	90%
ESB048240-S-□-□20	36-75	48	0.47	24	0.8	20	89%
ESB048120-D-□-□20	36-75	48	0.46	±12	±0.8	20	91%
ESB048150-D-□-□20	36-75	48	0.46	±15	±0.7	20	91%
ESB048240-D-□-□20	36-75	48	0.47	±24	±0.4	20	89%
ESB048050-S-□-□30	36-75	48	0.69	5	6	30	90%
ESB048120-S-□-□30	36-75	48	0.70	12	2.5	30	89%
ESB048150-S-□-□30	36-75	48	0.70	15	2	30	89%

# DC/DC产品介绍

## DC/DC 电源模块- E 系列

### 特色

- 内建EMI滤波器可通过 EN55032 Class A / EN 55032 Class B 无须外部零件(可选)
- 节省多达20%的电路板空间
- 包含单 / 双路输出
- 2:1 / 4:1 宽输入电压
- 6面全金属设计，散热及EMI佳
- 工作亮温:-45°C to +115°C (亦提供工作亮温:-55°C to +125°C可选)
- 输出电压调整范围-10% · +10%
- 工业标准引脚；完全可替代 2 " x1" 标准封装引脚
- 外壳: F：平壳 / P：一字壳 / B: 碟壳 (可选)

### ● ESC



UVLO

OCP

OVP

OTP

# DC/DC产品介绍

## Model Number Structure

**ESC 018 033 - S - P - F 50**

Series Name	Input Voltage (VDC)	Output Voltage (VDC)	Output Quantity	Remote Control Option	Shape	Watt
Evolving Sirius- Chivalry series –	012 : 9-18 018 : 9-36 024 : 18-36 036 : 18-75 048 : 36-75 110 : 40-160	033 : 3.3	S : Single	P : Positive logic N : Negative logic  1 : Positive logic + EMC Filter 0 : Negative logic + EMC Filter	F : Flat P : Groove Cover B : Base Plate	30 40 50
		050 : 5				
		120 : 12				
		150 : 15				
		240 : 24				
		120 : ±12	D : Dual			
		150 : ±15				
		240 : ±24				

## Model Selection Guide

Typical @ Ta=+25 °C under nominal line voltage conditions unless noted

Model	Input			Output			Efficiency
	Voltage (V)		Current (A)	Voltage	Current	Power	
	Range	Nominal	Full load	(V)	(A)	(W)	Typ.(%)
ESC012033-S-□-□30	9-18	12	2.81	3.3	9.1	30	89%
ESC012050-S-□-□30	9-18	12	2.78	5	6	30	90%
ESC012120-S-□-□30	9-18	12	2.81	12	2.5	30	89%
ESC012150-S-□-□30	9-18	12	2.81	15	2	30	89%
ESC012240-S-□-□30	9-18	12	2.81	24	1.3	30	89%
ESC012120-D-□-□30	9-18	12	2.81	±12	±1.3	30	89%
ESC012150-D-□-□30	9-18	12	2.81	±15	±1.0	30	89%
ESC012240-D-□-□30	9-18	12	2.84	±24	±0.6	30	88%
ESC012033-S-□-□40	9-18	12	3.75	3.3	12.1	40	89%
ESC012050-S-□-□40	9-18	12	3.70	5	8	40	90%
ESC012120-S-□-□40	9-18	12	3.75	12	3.3	40	89%
ESC012150-S-□-□40	9-18	12	3.75	15	2.7	40	89%
ESC012240-S-□-□40	9-18	12	3.75	24	1.7	40	89%
ESC012120-D-□-□40	9-18	12	3.75	±12	±1.7	40	89%
ESC012150-D-□-□40	9-18	12	3.75	±15	±1.3	40	89%
ESC012240-D-□-□40	9-18	12	3.79	±24	±0.8	40	88%
ESC012033-S-□-□50	9-18	12	4.68	3.3	15.1	50	89%
ESC012050-S-□-□50	9-18	12	4.63	5	10	50	90%
ESC012120-S-□-□50	9-18	12	4.68	12	4.2	50	89%



# DC/DC产品介绍

Typical @ Ta=+25 °C under nominal line voltage conditions unless noted

Model	Input			Output			Efficiency
	Voltage (V)		Current (A)	Voltage	Current	Power	
	Range	Nominal	Full load	(V)	(A)	(W)	Typ.(%)
ESC012150-S-□-□50	9-18	12	4.68	15	3.3	50	89%
ESC012240-S-□-□50	9-18	12	4.68	24	2.1	50	89%
ESC012120-D-□-□50	9-18	12	4.68	±12	±2.1	50	89%
ESC012150-D-□-□50	9-18	12	4.68	±15	±1.7	50	89%
ESC012240-D-□-□50	9-18	12	4.73	±24	±1.0	50	88%
ESC018033-S-□-□30	9-36	18	1.89	3.3	9.1	30	88%
ESC018050-S-□-□30	9-36	18	1.87	5	6	30	89%
ESC018120-S-□-□30	9-36	18	1.89	12	2.5	30	88%
ESC018150-S-□-□30	9-36	18	1.89	15	2	30	88%
ESC018240-S-□-□30	9-36	18	1.89	24	1.3	30	88%
ESC018120-D-□-□30	9-36	18	1.89	±12	±1.3	30	88%
ESC018150-D-□-□30	9-36	18	1.89	±15	±1.0	30	88%
ESC018240-D-□-□30	9-36	18	1.92	±24	±0.6	30	87%
ESC018033-S-□-□40	9-36	18	2.53	3.3	12.1	40	88%
ESC018050-S-□-□40	9-36	18	2.50	5	8	40	89%
ESC018120-S-□-□40	9-36	18	2.53	12	3.3	40	88%
ESC018150-S-□-□40	9-36	18	2.53	15	2.7	40	88%
ESC018240-S-□-□40	9-36	18	2.53	24	1.7	40	88%
ESC018120-D-□-□40	9-36	18	2.53	±12	±1.7	40	88%
ESC018150-D-□-□40	9-36	18	2.53	±15	±1.3	40	88%
ESC018240-D-□-□40	9-36	18	2.55	±24	±0.8	40	87%
ESC024033-S-□-□30	18-36	24	1.40	3.3	9.1	30	89%
ESC024050-S-□-□30	18-36	24	1.39	5	6	30	90%
ESC024120-S-□-□30	18-36	24	1.40	12	2.5	30	89%
ESC024150-S-□-□30	18-36	24	1.40	15	2	30	89%
ESC024240-S-□-□30	18-36	24	1.40	24	1.3	30	89%
ESC024120-D-□-□30	18-36	24	1.40	±12	±1.3	30	89%
ESC024150-D-□-□30	18-36	24	1.40	±15	±1.0	30	89%
ESC024240-D-□-□30	18-36	24	1.40	±24	±0.6	30	89%
ESC024033-S-□-□40	18-36	24	1.87	3.3	12.1	40	89%
ESC024050-S-□-□40	18-36	24	1.85	5	8	40	90%
ESC024120-S-□-□40	18-36	24	1.87	12	3.3	40	89%

# DC/DC产品介绍

Typical @ Ta=+25 °C under nominal line voltage conditions unless noted

Model	Input			Output			Efficiency
	Voltage (V)		Current (A)	Voltage	Current	Power	
	Range	Nominal	Full load	(V)	(A)	(W)	Typ.(%)
ESC024150-S-□-□40	18-36	24	1.87	15	2.7	40	89%
ESC024240-S-□-□40	18-36	24	1.87	24	1.7	40	89%
ESC024120-D-□-□40	18-36	24	1.87	±12	±1.7	40	89%
ESC024150-D-□-□40	18-36	24	1.87	±15	±1.3	40	89%
ESC024240-D-□-□40	18-36	24	1.87	±24	±0.8	40	89%
ESC024033-S-□-□50	18-36	24	2.34	3.3	15.1	50	89%
ESC024050-S-□-□50	18-36	24	2.31	5	10	50	90%
ESC024120-S-□-□50	18-36	24	2.34	12	4.2	50	89%
ESC024150-S-□-□50	18-36	24	2.34	15	3.3	50	89%
ESC024240-S-□-□50	18-36	24	2.34	24	2.1	50	89%
ESC024120-D-□-□50	18-36	24	2.34	±12	±2.1	50	89%
ESC024150-D-□-□50	18-36	24	2.34	±15	±1.7	50	89%
ESC024240-D-□-□50	18-36	24	2.37	±24	±1.0	50	88%
ESC036033-S-□-□30	18-75	36	0.95	3.3	9.1	30	88%
ESC036050-S-□-□30	18-75	36	0.94	5	6	30	89%
ESC036120-S-□-□30	18-75	36	0.95	12	2.5	30	88%
ESC036150-S-□-□30	18-75	36	0.95	15	2	30	88%
ESC036240-S-□-□30	18-75	36	0.95	24	1.3	30	88%
ESC036120-D-□-□30	18-75	36	0.95	±12	±1.3	30	88%
ESC036150-D-□-□30	18-75	36	0.95	±15	±1.0	30	88%
ESC036240-D-□-□30	18-75	36	0.96	±24	±0.6	30	87%
ESC036033-S-□-□40	18-75	36	1.26	3.3	12.1	40	88%
ESC036050-S-□-□40	18-75	36	1.25	5	8	40	89%
ESC036120-S-□-□40	18-75	36	1.26	12	3.3	40	88%
ESC036150-S-□-□40	18-75	36	1.26	15	2.7	40	88%
ESC036240-S-□-□40	18-75	36	1.26	24	1.7	40	88%
ESC036120-D-□-□40	18-75	36	1.26	±12	±1.7	40	88%
ESC036150-D-□-□40	18-75	36	1.26	±15	±1.3	40	88%
ESC036240-D-□-□40	18-75	36	1.28	±24	±0.8	40	87%
ESC048033-S-□-□30	36-75	48	0.70	3.3	9.1	30	89%
ESC048050-S-□-□30	36-75	48	0.69	5	6	30	90%

# DC/DC产品介绍

Typical @ Ta=+25 °C under nominal line voltage conditions unless noted

Model	Input			Output			Efficiency
	Voltage (V)		Current (A)	Voltage	Current	Power	
	Range	Nominal	Full load	(V)	(A)	(W)	Typ.(%)
ESC048120-S-□-□30	36-75	48	0.70	12	2.5	30	89%
ESC048150-S-□-□30	36-75	48	0.70	15	2	30	89%
ESC048240-S-□-□30	36-75	48	0.70	24	1.3	30	89%
ESC048120-D-□-□30	36-75	48	0.70	±12	±1.3	30	89%
ESC048150-D-□-□30	36-75	48	0.70	±15	±1.0	30	89%
ESC048240-D-□-□30	36-75	48	0.70	±24	±0.6	30	89%
ESC048033-S-□-□50	36-75	48	1.17	3.3	15.1	50	89%
ESC048050-S-□-□50	36-75	48	1.16	5	10	50	90%
ESC048120-S-□-□50	36-75	48	1.17	12	4.2	50	89%
ESC048150-S-□-□50	36-75	48	1.17	15	3.3	50	89%
ESC048240-S-□-□50	36-75	48	1.17	24	2.1	50	89%
ESC048120-D-□-□50	36-75	48	1.17	±12	±2.1	50	89%
ESC048150-D-□-□50	36-75	48	1.17	±15	±1.7	50	89%
ESC048240-D-□-□50	36-75	48	1.17	±24	±1.0	50	89%
ESC110033-S-□-□20	40-160	110	0.21	3.3	6.1	20	88%
ESC110050-S-□-□20	40-160	110	0.20	5	4	20	89%
ESC110120-S-□-□20	40-160	110	0.21	12	1.7	20	88%
ESC110150-S-□-□20	40-160	110	0.21	15	1.3	20	88%
ESC110240-S-□-□20	40-160	110	0.21	24	0.8	20	88%
ESC110120-D-□-□20	40-160	110	0.21	±12	±0.8	20	88%
ESC110150-D-□-□20	40-160	110	0.21	±15	±0.7	20	88%
ESC110240-D-□-□20	40-160	110	0.21	±24	±0.4	20	87%
ESC110033-S-□-□30	40-160	110	0.31	3.3	9.1	30	88%
ESC110050-S-□-□30	40-160	110	0.31	5	6	30	89%
ESC110120-S-□-□30	40-160	110	0.31	12	2.5	30	88%
ESC110150-S-□-□30	40-160	110	0.31	15	2	30	88%
ESC110240-S-□-□30	40-160	110	0.31	24	1.3	30	87%
ESC110120-D-□-□30	40-160	110	0.31	±12	±1.3	30	88%
ESC110150-D-□-□30	40-160	110	0.31	±15	±1.0	30	88%
ESC110240-D-□-□30	40-160	110	0.31	±24	±0.6	30	87%
ESC110033-S-□-□40	40-160	110	0.41	3.3	12.1	40	88%



# DC/DC产品介绍

Typical @ Ta=+25 °C under nominal line voltage conditions unless noted

Model	Input			Output			Efficiency
	Voltage (V)		Current (A)	Voltage	Current	Power	
	Range	Nominal	Full load	(V)	(A)	(W)	Typ.(%)
ESC110050-S-□-□40	40-160	110	0.41	5	8	40	89%
ESC110120-S-□-□40	40-160	110	0.41	12	3.3	40	88%
ESC110150-S-□-□40	40-160	110	0.41	15	2.7	40	88%
ESC110240-S-□-□40	40-160	110	0.42	24	1.7	40	87%
ESC110120-D-□-□40	40-160	110	0.41	±12	±1.7	40	88%
ESC110150-D-□-□40	40-160	110	0.41	±15	±1.3	40	88%
ESC110240-D-□-□40	40-160	110	0.42	±24	±0.8	40	87%
ESC110033-S-□-□50	40-160	110	0.52	3.3	15.1	50	88%
ESC110050-S-□-□50	40-160	110	0.51	5	10	50	89%
ESC110120-S-□-□50	40-160	110	0.52	12	4.2	50	88%
ESC110150-S-□-□50	40-160	110	0.52	15	3.3	50	88%
ESC110240-S-□-□50	40-160	110	0.52	24	2.1	50	87%
ESC110120-D-□-□50	40-160	110	0.52	±12	±2.1	50	88%
ESC110150-D-□-□50	40-160	110	0.52	±15	±1.7	50	88%
ESC110240-D-□-□50	40-160	110	0.52	±24	±1.0	50	87%

# DC/DC产品介绍

## DC/DC 电源模块- N 系列

### ● ESAN



## 特色

- 内建EMI滤波器可通过 EN55032 Class A，无须外部零件 (视不同型号而定)
- 2:1 / 4:1 宽输入电压
- 包含单 / 双路输出
- 标准引脚: DIP24 包装认证 (可选用SMD包装)
- +70°C不降额
- 工作壳温: -40°C to +85°C
- 输出电压调整范围-10% · +10%
- 输入与输出电源隔离达 1600VDC
- 金属壳封装/塑胶壳封装(可选)
- 一般应用

UVLO

OCP

OVP

OTP

# DC/DC产品介绍

ESAN 018 033 - S - P - S 15

Series Name	Input Voltage (VDC)	Output Voltage (VDC)	Output Quantity	Remote Control Option	Shape	Watt
Evolving Sirius- Agate series – New generation	018 : 9-36 024 : 18-36 036 : 18-75 048 : 36-75 110 : 40-160	033 : 3.3	S : Single    D : Dual	P : Positive logic N : Negative logic	D : DIP	07 10 15
		050 : 5			MD : Metal Case	
		120 : 12				
		150 : 15				
		050 : ±5			S : SMD	
	120 : ±12		MS : Metal Case			
	150 : ±15					

## Model Selection Guide

Typical @ Ta=+25 °C under nominal line voltage conditions unless noted

Model	Input			Output			Efficiency
	Voltage (V)		Current (A)	Voltage	Current	Power	
	Range	Nominal	Full load	(V)	(A)	(W)	Typ.(%)
ESAN018033-S-□-□07	9-36	18	0.45	3.3	2.1	7	87%
ESAN018050-S-□-□07	9-36	18	0.44	5	1.4	7	88%
ESAN018120-S-□-□07	9-36	18	0.45	12	0.6	7	87%
ESAN018150-S-□-□07	9-36	18	0.45	15	0.5	7	87%
ESAN018050-D-□-□07	9-36	18	0.46	±5.0	±0.7	7	84%
ESAN018120-D-□-□07	9-36	18	0.45	±12.0	±0.3	7	87%
ESAN018150-D-□-□07	9-36	18	0.44	±15.0	±0.2	7	88%
ESAN018033-S-□-□10	9-36	18	0.63	3.3	3	10	88%
ESAN018050-S-□-□10	9-36	18	0.62	5	2	10	89%
ESAN018120-S-□-□10	9-36	18	0.64	12	0.83	10	87%
ESAN018150-S-□-□10	9-36	18	0.63	15	0.7	10	88%
ESAN018050-D-□-□10	9-36	18	0.65	±5.0	±1.0	10	85%
ESAN018120-D-□-□10	9-36	18	0.63	±12.0	±0.4	10	88%
ESAN018150-D-□-□10	9-36	18	0.63	±15.0	±0.3	10	88%
ESAN018033-S-□-□15	9-36	18	0.95	3.3	4.5	15	88%
ESAN018050-S-□-□15	9-36	18	0.94	5	3	15	89%
ESAN018120-S-□-□15	9-36	18	0.96	12	1.3	15	87%
ESAN018150-S-□-□15	9-36	18	0.95	15	1	15	88%
ESAN018050-D-□-□15	9-36	18	0.98	±5.0	±1.5	15	85%



# DC/DC产品介绍

Typical @ Ta=+25 °C under nominal line voltage conditions unless noted

Model	Input			Output			Efficiency
	Voltage (V)		Current (A)	Voltage	Current	Power	
	Range	Nominal	Full load	(V)	(A)	(W)	Typ.(%)
ESAN018120-D-□-□15	9-36	18	0.95	±12.0	±0.6	15	88%
ESAN018150-D-□-□15	9-36	18	0.95	±15.0	±0.5	15	88%
ESAN024033-S-□-□07	18-36	24	0.33	3.3	2.1	7	88%
ESAN024050-S-□-□07	18-36	24	0.33	5	1.4	7	89%
ESAN024120-S-□-□07	18-36	24	0.33	12	0.6	7	88%
ESAN024150-S-□-□07	18-36	24	0.33	15	0.5	7	88%
ESAN024050-D-□-□07	18-36	24	0.34	±5.0	±0.7	7	85%
ESAN024120-D-□-□07	18-36	24	0.33	±12.0	±0.3	7	88%
ESAN024150-D-□-□07	18-36	24	0.33	±15.0	±0.2	7	88%
ESAN024033-S-□-□10	18-36	24	0.47	3.3	3	10	88%
ESAN024050-S-□-□10	18-36	24	0.47	5	2	10	89%
ESAN024120-S-□-□10	18-36	24	0.47	12	0.8	10	88%
ESAN024150-S-□-□10	18-36	24	0.47	15	0.7	10	88%
ESAN024050-D-□-□10	18-36	24	0.48	±5.0	±1.0	10	86%
ESAN024120-D-□-□10	18-36	24	0.47	±12.0	±0.4	10	88%
ESAN024150-D-□-□10	18-36	24	0.47	±15.0	±0.3	10	88%
ESAN024033-S-□-□15	18-36	24	0.71	3.3	4.5	15	88%
ESAN024050-S-□-□15	18-36	24	0.70	5	3	15	89%
ESAN024120-S-□-□15	18-36	24	0.71	12	1.3	15	88%
ESAN024150-S-□-□15	18-36	24	0.71	15	1	15	88%
ESAN024050-D-□-□15	18-36	24	0.73	±5.0	±1.5	15	86%
ESAN024120-D-□-□15	18-36	24	0.71	±12.0	±0.6	15	88%
ESAN024150-D-□-□15	18-36	24	0.71	±15.0	±0.5	15	88%
ESAN036033-S-□-□07	18-75	36	0.22	3.3	2.1	7	87%
ESAN036050-S-□-□07	18-75	36	0.22	5	1.4	7	88%
ESAN036120-S-□-□07	18-75	36	0.22	12	0.6	7	87%
ESAN036150-S-□-□07	18-75	36	0.22	15	0.5	7	87%
ESAN036050-D-□-□07	18-75	36	0.23	±5.0	±0.7	7	84%
ESAN036120-D-□-□07	18-75	36	0.22	±12.0	±0.3	7	87%
ESAN036150-D-□-□07	18-75	36	0.22	±15.0	±0.2	7	88%
ESAN036033-S-□-□10	18-75	36	0.32	3.3	3	10	88%
ESAN036050-S-□-□10	18-75	36	0.31	5	2	10	89%
ESAN036120-S-□-□10	18-75	36	0.32	12	0.83	10	87%

# DC/DC产品介绍

Typical @ Ta=+25 °C under nominal line voltage conditions unless noted

Model	Input			Output			Efficiency
	Voltage (V)		Current (A)	Voltage	Current	Power	
	Range	Nominal	Full load	(V)	(A)	(W)	Typ.(%)
ESAN036150-S-□-□10	18-75	36	0.32	15	0.7	10	88%
ESAN036050-D-□-□10	18-75	36	0.33	±5.0	±1.0	10	85%
ESAN036120-D-□-□10	18-75	36	0.32	±12.0	±0.3	10	87%
ESAN036150-D-□-□10	18-75	36	0.32	±15.0	±0.2	10	88%
ESAN036033-S-□-□15	18-75	36	0.47	3.3	4.5	15	88%
ESAN036050-S-□-□15	18-75	36	0.47	5	3	15	89%
ESAN036120-S-□-□15	18-75	36	0.48	12	1.3	15	87%
ESAN036150-S-□-□15	18-75	36	0.47	15	1	15	88%
ESAN036050-D-□-□15	18-75	36	0.49	±5.0	±1.5	15	85%
ESAN036120-D-□-□15	18-75	36	0.48	±12.0	±0.6	15	87%
ESAN036150-D-□-□15	18-75	36	0.47	±15.0	±0.5	15	88%
ESAN048033-S-□-□07	36-75	48	0.17	3.3	2.1	7	88%
ESAN048050-S-□-□07	36-75	48	0.16	5	1.4	7	89%
ESAN048120-S-□-□07	36-75	48	0.17	12	0.6	7	88%
ESAN048150-S-□-□07	36-75	48	0.17	15	0.5	7	88%
ESAN048050-D-□-□07	36-75	48	0.17	±5.0	±0.7	7	85%
ESAN048120-D-□-□07	18-36	48	0.17	±12.0	±0.3	7	88%
ESAN048150-D-□-□07	18-36	48	0.17	±15.0	±0.2	7	88%
ESAN048033-S-□-□10	36-75	48	0.24	3.3	3	10	88%
ESAN048050-S-□-□10	36-75	48	0.23	5	2	10	89%
ESAN048120-S-□-□10	36-75	48	0.24	12	0.8	10	88%
ESAN048150-S-□-□10	36-75	48	0.24	15	0.7	10	88%
ESAN048050-D-□-□10	36-75	48	0.24	±5.0	±1.0	10	86%
ESAN048120-D-□-□10	18-36	48	0.24	±12.0	±0.4	10	88%
ESAN048150-D-□-□10	18-36	48	0.24	±15.0	±0.3	10	88%
ESAN048033-S-□-□15	36-75	48	0.36	3.3	4.5	15	88%
ESAN048050-S-□-□15	36-75	48	0.35	5	3	15	89%
ESAN048120-S-□-□15	36-75	48	0.36	12	1.3	15	88%
ESAN048150-S-□-□15	36-75	48	0.36	15	1	15	88%
ESAN048050-D-□-□15	36-75	48	0.36	±5.0	±1.5	15	86%
ESAN048120-D-□-□15	36-75	48	0.36	±12.0	±0.6	15	88%
ESAN048150-D-□-□15	36-75	48	0.36	±15.0	±0.5	15	88%
ESAN110033-S-□-□07	40-160	110	0.07	3.3	2.1	7	87%
ESAN110050-S-□-□07	40-160	110	0.07	5	1.4	7	88%

# DC/DC产品介绍

Typical @ Ta=+25 °C under nominal line voltage conditions unless noted

Model	Input			Output			Efficiency
	Voltage (V)		Current (A)	Voltage	Current	Power	
	Range	Nominal	Full load	(V)	(A)	(W)	Typ.(%)
ESAN110120-S-□-□07	40-160	110	0.07	12	0.6	7	87%
ESAN110150-S-□-□07	40-160	110	0.07	15	0.5	7	87%
ESAN110050-D-□-□07	40-160	110	0.08	±5.0	±0.7	7	84%
ESAN110120-D-□-□07	40-160	110	0.07	±12.0	±0.3	7	87%
ESAN110150-D-□-□07	40-160	110	0.07	±15.0	±0.2	7	87%
ESAN110033-S-□-□10	40-160	110	0.10	3.3	3	10	88%
ESAN110050-S-□-□10	40-160	110	0.10	5	2	10	89%
ESAN110120-S-□-□10	40-160	110	0.10	12	0.83	10	87%
ESAN110150-S-□-□10	40-160	110	0.10	15	0.7	10	88%
ESAN110050-D-□-□10	40-160	110	0.11	±5.0	±1.0	10	85%
ESAN110120-D-□-□10	40-160	110	0.10	±12.0	±0.4	10	87%
ESAN110150-D-□-□10	40-160	110	0.10	±15.0	±0.3	10	88%
ESAN110033-S-□-□15	40-160	110	0.15	3.3	4.5	15	88%
ESAN110050-S-□-□15	40-160	110	0.15	5	3	15	89%
ESAN110120-S-□-□15	40-160	110	0.15	12	1.3	15	88%
ESAN110150-S-□-□15	40-160	110	0.15	15	1	15	88%
ESAN110050-D-□-□15	40-160	110	0.16	±5.0	±1.5	15	85%
ESAN110120-D-□-□15	40-160	110	0.15	±12.0	±0.6	15	88%
ESAN110150-D-□-□15	40-160	110	0.15	±15.0	±0.5	15	88%

# DC/DC产品介绍

## DC/DC 电源模块- N 系列

### ● ESBN



## 特色

- 内建EMI滤波器可通过 EN55032 Class A，无须外部零件 (视不同型号而定)
- 2:1 / 4:1 宽输入电压
- 包含单 / 双路输出
- 5面全金属设计，散热及EMI佳
- 输出电压调整范围-10% · +10%
- 工作亮温:-45°C to +115°C
- 工业标准引脚
- 外壳: F：平壳 / P：一字壳 (可选)
- 一般应用

UVLO

OCP

OVP

OTP



# DC/DC产品介绍

## Model Number Structure

ESBN 018 033 - S - P - F 20

Series Name	Input Voltage (VDC)	Output Voltage (VDC)	Output Quantity	Remote Control Option	Shape	Watt
Evolving Sirius- Bishop series – New generation	018 : 9-36 024 : 18-36 036 : 18-75 048 : 36-75 110 : 40-160	033 : 3.3	S : Single   D : Dual	P : Positive logic N : Negative logic	F : Flat P : PV	10 15 20
		050 : 5				
		120 : 12				
		150 : 15				
		050 : ±5				
		120 : ±12				
		150 : ±15				

## Model Selection Guide

Typical @ Ta=+25 °C under nominal line voltage conditions unless noted

Model	Input			Output			Efficiency
	Voltage (V)		Current (A)	Voltage	Current	Power	
	Range	Nominal	Full load	(V)	(A)	(W)	Typ.(%)
ESBN018033-S-□-□10	9-36	18	0.64	3.3	3	10	87%
ESBN018050-S-□-□10	9-36	18	0.63	5	2	10	88%
ESBN018120-S-□-□10	9-36	18	0.64	12	0.8	10	87%
ESBN018150-S-□-□10	9-36	18	0.63	15	0.7	10	88%
ESBN018050-D-□-□10	9-36	18	0.66	±5	±1.0	10	84%
ESBN018120-D-□-□10	9-36	18	0.64	±12	±0.4	10	87%
ESBN018150-D-□-□10	9-36	18	0.63	±15	±0.3	10	88%
ESBN018033-S-□-□15	9-36	18	0.95	3.3	4.5	15	88%
ESBN018050-S-□-□15	9-36	18	0.94	5	3	15	89%
ESBN018120-S-□-□15	9-36	18	0.95	12	1.3	15	88%
ESBN018150-S-□-□15	9-36	18	0.94	15	1	15	89%
ESBN018050-D-□-□15	9-36	18	0.98	±5	±1.5	15	85%
ESBN018120-D-□-□15	9-36	18	0.95	±12	±0.6	15	88%
ESBN018150-D-□-□15	9-36	18	0.94	±15	±0.5	15	89%
ESBN018033-S-□-□20	9-36	18	1.26	3.3	6.1	20	88%
ESBN018050-S-□-□20	9-36	18	1.25	5	4	20	89%

# DC/DC产品介绍

Typical @ Ta=+25 °C under nominal line voltage conditions unless noted

Model	Input			Output			Efficiency
	Voltage (V)		Current (A)	Voltage	Current	Power	
	Range	Nominal	Full load	(V)	(A)	(W)	Typ.(%)
ESBN018120-S-□-□20	9-36	18	1.26	12	1.7	20	88%
ESBN018150-S-□-□20	9-36	18	1.25	15	1.3	20	89%
ESBN018120-D-□-□20	9-36	18	1.26	±12	±0.8	20	88%
ESBN018150-D-□-□20	9-36	18	1.25	±15	±0.7	20	89%
ESBN024033-S-□-□10	18-36	24	0.47	3.3	3	10	88%
ESBN024050-S-□-□10	18-36	24	0.47	5	2	10	89%
ESBN024120-S-□-□10	18-36	24	0.47	12	0.8	10	88%
ESBN024150-S-□-□10	18-36	24	0.47	15	0.7	10	89%
ESBN024050-D-□-□10	18-36	24	0.49	±5	±1.0	10	85%
ESBN024120-D-□-□10	18-36	24	0.47	±12	±0.4	10	88%
ESBN024150-D-□-□10	18-36	24	0.47	±15	±0.3	10	88%
ESBN024033-S-□-□15	18-36	24	0.70	3.3	4.5	15	89%
ESBN024050-S-□-□15	18-36	24	0.69	5	3	15	90%
ESBN024120-S-□-□15	18-36	24	0.70	12	1.3	15	89%
ESBN024150-S-□-□15	18-36	24	0.70	15	1	15	89%
ESBN024050-D-□-□15	18-36	24	0.73	±5	±1.5	15	86%
ESBN024120-D-□-□15	18-36	24	0.70	±12	±0.6	15	89%
ESBN024150-D-□-□15	18-36	24	0.70	±15	±0.5	15	89%
ESBN024033-S-□-□20	18-36	24	0.94	3.3	6.1	20	89%
ESBN024050-S-□-□20	18-36	24	0.93	5	4	20	90%
ESBN024120-S-□-□20	18-36	24	0.94	12	1.7	20	89%
ESBN024150-S-□-□20	18-36	24	0.94	15	1.3	20	89%
ESBN024120-D-□-□20	18-36	24	0.94	±12	±0.8	20	89%
ESBN024150-D-□-□20	18-36	24	0.94	±15	±0.7	20	89%
ESBN036033-S-□-□10	18-75	36	0.32	3.3	3	10	87%
ESBN036050-S-□-□10	18-75	36	0.32	5	2	10	88%
ESBN036120-S-□-□10	18-75	36	0.32	12	0.8	10	87%
ESBN036150-S-□-□10	18-75	36	0.32	15	0.7	10	88%
ESBN036050-D-□-□10	18-75	36	0.33	±5	±1.0	10	84%
ESBN036120-D-□-□10	18-75	36	0.32	±12	±0.4	10	87%

# DC/DC产品介绍

Typical @ Ta=+25 °C under nominal line voltage conditions unless noted

Model	Input			Output			Efficiency
	Voltage (V)		Current (A)	Voltage	Current	Power	
	Range	Nominal	Full load	(V)	(A)	(W)	Typ.(%)
ESBN036150-D-□-□10	18-75	36	0.32	±15	±0.3	10	88%
ESBN036033-S-□-□15	18-75	36	0.47	3.3	4.5	15	88%
ESBN036050-S-□-□15	18-75	36	0.47	5	3	15	89%
ESBN036120-S-□-□15	18-75	36	0.47	12	1.3	15	88%
ESBN036150-S-□-□15	18-75	36	0.47	15	1	15	89%
ESBN036120-D-□-□15	18-75	36	0.47	±12	±0.6	15	88%
ESBN036150-D-□-□15	18-75	36	0.47	±15	±0.5	15	89%
ESBN036033-S-□-□20	18-75	36	0.62	3.3	6.1	20	89%
ESBN036050-S-□-□20	18-75	36	0.62	5	4	20	90%
ESBN036120-S-□-□20	18-75	36	0.63	12	1.7	20	88%
ESBN036150-S-□-□20	18-75	36	0.62	15	1.3	20	89%
ESBN036120-D-□-□20	18-75	36	0.63	±12	±0.8	20	88%
ESBN036150-D-□-□20	18-75	36	0.62	±15	±0.7	20	89%
ESBN048033-S-□-□10	36-75	48	0.24	3.3	3	10	88%
ESBN048050-S-□-□10	36-75	48	0.23	5	2	10	89%
ESBN048120-S-□-□10	36-75	48	0.24	12	0.8	10	88%
ESBN048150-S-□-□10	36-75	48	0.23	15	0.7	10	89%
ESBN048050-D-□-□10	36-75	48	0.25	±5	±1.0	10	85%
ESBN048120-D-□-□10	36-75	48	0.24	±12	±0.4	10	88%
ESBN048150-D-□-□10	36-75	48	0.24	±15	±0.3	10	88%
ESBN048033-S-□-□15	36-75	48	0.35	3.3	4.5	15	89%
ESBN048050-S-□-□15	36-75	48	0.35	5	3	15	90%
ESBN048120-S-□-□15	36-75	48	0.35	12	1.3	15	89%
ESBN048150-S-□-□15	36-75	48	0.35	15	1	15	89%
ESBN048050-D-□-□15	36-75	48	0.36	±5	±1.5	15	86%
ESBN048120-D-□-□15	36-75	48	0.35	±12	±0.6	15	89%
ESBN048150-D-□-□15	36-75	48	0.35	±15	±0.5	15	89%
ESBN048033-S-□-□20	36-75	48	0.47	3.3	6.1	20	89%
ESBN048050-S-□-□20	36-75	48	0.46	5	4	20	90%
ESBN048120-S-□-□20	36-75	48	0.47	12	1.7	20	89%
ESBN048150-S-□-□20	36-75	48	0.47	15	1.3	20	89%
ESBN048120-D-□-□20	36-75	48	0.47	±12	±0.8	20	89%

# DC/DC产品介绍

Typical @ Ta=+25 °C under nominal line voltage conditions unless noted

Model	Input			Output			Efficiency
	Voltage (V)		Current (A)	Voltage	Current	Power	
	Range	Nominal	Full load	(V)	(A)	(W)	Typ.(%)
ESBN048150-D-□-□20	36-75	48	0.47	±15	±0.7	20	89%
ESBN110033-S-□-□10	40-160	110	0.10	3.3	3	10	87%
ESBN110050-S-□-□10	40-160	110	0.10	5	2	10	88%
ESBN110120-S-□-□10	40-160	110	0.10	12	0.8	10	87%
ESBN110150-S-□-□10	40-160	110	0.10	15	0.7	10	88%
ESBN110050-D-□-□10	40-160	110	0.11	±5	±1.0	10	84%
ESBN110120-D-□-□10	40-160	110	0.10	±12	±0.4	10	87%
ESBN110150-D-□-□10	40-160	110	0.10	±15	±0.3	10	88%
ESBN110033-S-□-□15	40-160	110	0.15	3.3	4.5	15	88%
ESBN110050-S-□-□15	40-160	110	0.15	5	3	15	89%
ESBN110120-S-□-□15	40-160	110	0.15	12	1.3	15	88%
ESBN110150-S-□-□15	40-160	110	0.15	15	1	15	89%
ESBN110050-D-□-□15	40-160	110	0.16	±5	±1.5	15	85%
ESBN110120-D-□-□15	40-160	110	0.15	±12	±0.6	15	88%
ESBN110150-D-□-□15	40-160	110	0.15	±15	±0.5	15	89%
ESBN110033-S-□-□20	40-160	110	0.21	3.3	6.1	20	88%
ESBN110050-S-□-□20	40-160	110	0.20	5	4	20	89%
ESBN110120-S-□-□20	40-160	110	0.21	12	1.7	20	88%
ESBN110150-S-□-□20	40-160	110	0.20	15	1.3	20	89%
ESBN110120-D-□-□20	40-160	110	0.21	±12	±0.8	20	88%
ESBN110150-D-□-□20	40-160	110	0.20	±15	±0.7	20	89%



# DC/DC产品介绍

## DC/DC 电源模块- N 系列

### ● ESCN



## 特色

- 内建EMI滤波器可通过 EN55032 Class A，无须外部零件 (视不同型号而定)
- 2:1 / 4:1 宽输入电压
- 包含单 / 双路输出
- 5面全金属设计，散热及EMI佳 (亦提供6面金属封装可选)
- 输出电压调整范围-10% · +10%
- 工作亮温:-45°C to +115°C
- 工业标准引脚
- 业界最大功率密度比；可达60W
- 一般应用

UVLO

OCP

OVP

OTP

# DC/DC产品介绍

## Model Number Structure

ESCN 018 033 - S - P - F 50

Series Name	Input Voltage (VDC)	Output Voltage (VDC)	Output Quantity	Remote Control Option	Shape	Watt
Evolving Sirius- Chivalry series – New generation	018 : 9-36 024 : 18-36 036 : 18-75 048 : 36-75 110 : 40-160	033 : 3.3	S : Single	P : Positive logic N : Negative logic	F : Flat CS : Full metal jacket	30 40 50
		050 : 5				
		120 : 12				
		150 : 15				
		240 : 24				
		120 : ±12	D : Dual			
		150 : ±15				

## Model Selection Guide

Typical @ Ta=+25 °C under nominal line voltage conditions unless noted

Model	Input			Output			Efficiency
	Voltage (V)		Current (A)	Voltage	Current	Power	
	Range	Nominal	Full load	(V)	(A)	(W)	Typ.(%)
ESCN018033-S-□-□30	9-36	18	1.87	3.3	9.1	30	89%
ESCN018050-S-□-□30	9-36	18	1.85	5	6.0	30	90%
ESCN018120-S-□-□30	9-36	18	1.87	12	2.5	30	89%
ESCN018150-S-□-□30	9-36	18	1.87	15	2.0	30	89%
ESCN018120-D-□-□30	9-36	18	1.87	±12	±1.3	30	89%
ESCN018150-D-□-□30	9-36	18	1.87	±15	±1.0	30	89%
ESCN018033-S-□-□40	9-36	18	2.50	3.3	12.1	40	89%
ESCN018050-S-□-□40	9-36	18	2.47	5	8.0	40	90%
ESCN018120-S-□-□40	9-36	18	2.50	12	3.3	40	89%
ESCN018150-S-□-□40	9-36	18	2.50	15	2.7	40	89%
ESCN018120-D-□-□40	9-36	18	2.50	±12	±1.7	40	89%
ESCN018150-D-□-□40	9-36	18	2.50	±15	±1.3	40	89%
ESCN018050-S-□-□50	9-36	18	3.09	5	10	50	90%
ESCN018120-S-□-□50	9-36	18	3.12	12	4.16	50	89%
ESCN018240-S-□-□50	9-36	18	3.12	24	2.08	50	89%

# DC/DC产品介绍

Typical @ Ta=+25 °C under nominal line voltage conditions unless noted

Model	Input			Output			Efficiency
	Voltage (V)		Current (A)	Voltage	Current	Power	
	Range	Nominal	Full load	(V)	(A)	(W)	Typ.(%)
ESCN024033-S-□-□30	18-36	24	1.40	3.3	9.1	30	89%
ESCN024050-S-□-□30	18-36	24	1.39	5	6.0	30	90%
ESCN024120-S-□-□30	18-36	24	1.40	12	2.5	30	89%
ESCN024150-S-□-□30	18-36	24	1.40	15	2.0	30	89%
ESCN024120-D-□-□30	18-36	24	1.40	±12	±1.3	30	89%
ESCN024150-D-□-□30	18-36	24	1.40	±15	±1.0	30	89%
ESCN024033-S-□-□40	18-36	24	1.87	3.3	12.1	40	89%
ESCN024050-S-□-□40	18-36	24	1.85	5	8.0	40	90%
ESCN024120-S-□-□40	18-36	24	1.87	12	3.3	40	89%
ESCN024150-S-□-□40	18-36	24	1.87	15	2.7	40	89%
ESCN024240-S-□-□40	18-36	24	1.87	24	1.66	40	89%
ESCN024120-D-□-□40	18-36	24	1.87	±12	±1.7	40	89%
ESCN024150-D-□-□40	18-36	24	1.87	±15	±1.3	40	89%
ESCN036033-S-□-□30	18-75	36	0.94	3.3	9.1	30	89%
ESCN036050-S-□-□30	18-75	36	0.93	5	6.0	30	90%
ESCN036120-S-□-□30	18-75	36	0.94	12	2.5	30	89%
ESCN036150-S-□-□30	18-75	36	0.94	15	2.0	30	89%
ESCN036120-D-□-□30	18-75	36	0.94	±12	±1.3	30	89%
ESCN036150-D-□-□30	18-75	36	0.94	±15	±1.0	30	89%
ESCN036033-S-□-□40	18-75	36	1.25	3.3	12.1	40	89%
ESCN036050-S-□-□40	18-75	36	1.23	5	8.0	40	90%
ESCN036120-S-□-□40	18-75	36	1.25	12	3.3	40	89%
ESCN036150-S-□-□40	18-75	36	1.25	15	2.7	40	89%
ESCN036120-D-□-□40	18-75	36	1.25	±12	±1.7	40	89%
ESCN036150-D-□-□40	18-75	36	1.25	±15	±1.3	40	89%
ESCN036050-S-□-□50	18-75	36	1.54	5	10	50	90%
ESCN036120-S-□-□50	18-75	36	1.56	12	4.16	50	89%
ESCN036240-S-□-□50	18-75	36	1.56	24	2.08	50	89%
ESCN048033-S-□-□30	36-75	48	0.70	3.3	9.1	30	89%
ESCN048050-S-□-□30	36-75	48	0.69	5	6.0	30	90%
ESCN048120-S-□-□30	36-75	48	0.70	12	2.5	30	89%

# DC/DC产品介绍

Typical @ Ta=+25 °C under nominal line voltage conditions unless noted

Model	Input			Output			Efficiency
	Voltage (V)		Current (A)	Voltage	Current	Power	
	Range	Nominal	Full load	(V)	(A)	(W)	Typ.(%)
ESCN048150-S-□-□30	36-75	48	0.70	15	2.0	30	89%
ESCN048120-D-□-□30	36-75	48	0.70	±12	±1.3	30	89%
ESCN048150-D-□-□30	36-75	48	0.70	±15	±1.0	30	89%
ESCN048033-S-□-□40	36-75	48	0.94	3.3	12.1	40	89%
ESCN048050-S-□-□40	36-75	48	0.93	5	8.0	40	90%
ESCN048120-S-□-□40	36-75	48	0.94	12	3.3	40	89%
ESCN048150-S-□-□40	36-75	48	0.94	15	2.7	40	89%
ESCN048120-D-□-□40	36-75	48	0.94	±12	±1.7	40	89%
ESCN048150-D-□-□40	36-75	48	0.94	±15	±1.3	40	89%
ESCN110033-S-□-□30	40-160	110	0.31	3.3	9.1	30	88%
ESCN110050-S-□-□30	40-160	110	0.31	5	6.0	30	89%
ESCN110120-S-□-□30	40-160	110	0.31	12	2.5	30	88%
ESCN110150-S-□-□30	40-160	110	0.31	15	2.0	30	88%
ESCN110240-S-□-□30	40-160	110	0.31	24	0.8	30	88%
ESCN110120-D-□-□30	40-160	110	0.31	±12	±1.3	30	88%
ESCN110150-D-□-□30	40-160	110	0.31	±15	±1.0	30	88%
ESCN110033-S-□-□40	40-160	110	0.41	3.3	12.1	40	88%
ESCN110050-S-□-□40	40-160	110	0.41	5	8.0	40	89%
ESCN110120-S-□-□40	40-160	110	0.41	12	3.3	40	88%
ESCN110150-S-□-□40	40-160	110	0.41	15	2.7	40	88%
ESCN110120-D-□-□40	40-160	110	0.41	±12	±1.6	40	88%
ESCN110150-D-□-□40	40-160	110	0.41	±15	±1.3	40	88%

# DC/DC产品介绍

## DC/DC 电源模块- S 系列

### ● ESAS



## 特色

- 内建EMI滤波器可通过 EN55032 Class A，无须外部零件 (视不同型号而定)
- 4:1 宽输入电压
- 包含单 / 双路输出
- 标准引脚: DIP24 包装认证 (可选用SMD包装)
- +70°C不降额
- 工作壳温:-40°C to +80°C
- 输出电压调整范围-10% · +10%
- 输入与输出电源隔离达 1600VDC
- 金属壳封装/塑胶壳封装(可选)
- Fully SMT制造
- 标准品，交期好，性价比高

UVLO

OCP

OVP

OTP



# DC/DC产品介绍

## Model Number Structure

ESAS 024W 050 - S - P - S 15

Series Name	Input Voltage (VDC)	Output Voltage (VDC)	Output Quantity	Remote Control Option	Shape	Watt
Evolving Sirius- Agate series – Second	024W : 9-36 048W : 18-75 110 : 40-160	050 : 5	S : Single	P : Positive logic N : Negative logic	D : DIP	15
		120 : 12			MD : Metal Case	
		150 : 15	D : Dual		S : SMD	
		120 : ±12 150 : ±15			MS : Metal Case	

## Model Selection Guide

Typical @ Ta=+25 °C under nominal line voltage conditions unless noted

Model	Input			Output			Efficiency
	Voltage (V)		Current (A)	Voltage	Current	Power	
	Range	Nominal	Full load	(V)	(A)	(W)	Typ.(%)
ESAS024W050-S-□-□15	9-36	24	0.71	5	3	15	88%
ESAS024W120-S-□-□15	9-36	24	0.71	12	1.25	15	88%
ESAS024W150-S-□-□15	9-36	24	0.71	15	1	15	88%
ESAS024W120-D-□-□15	9-36	24	0.71	±12	±0.63	15	88%
ESAS024W150-D-□-□15	9-36	24	0.71	±15	±0.5	15	88%
ESAS048W050-S-□-□15	18-75	48	0.36	5	3	15	88%
ESAS048W120-S-□-□15	18-75	48	0.36	12	1.25	15	88%
ESAS048W150-S-□-□15	18-75	48	0.36	15	1	15	88%
ESAS048W120-D-□-□15	18-75	48	0.36	±12	±0.63	15	88%
ESAS048W150-D-□-□15	18-75	48	0.36	±15	±0.5	15	88%
ESAS110050-S-□-□15	40-160	110	0.15	5	3	15	88%
ESAS110120-S-□-□15	40-160	110	0.15	12	1.25	15	88%
ESAS110150-S-□-□15	40-160	110	0.15	15	1	15	88%
ESAS110120-D-□-□15	40-160	110	0.15	±12	±0.63	15	88%
ESAS110150-D-□-□15	40-160	110	0.15	±15	±0.5	15	88%

# DC/DC产品介绍

## DC/DC 电源模块- S 系列

### ● ESBS



## 特色

- 内建EMI滤波器可通过 EN55032 Class A，无须外部零件 (视不同型号而定)
- 4:1 宽输入电压
- 包含单 / 双路输出
- 5面全金属设计，散热及EMI佳
- 工作壳温: -40°C to +100°C
- 输出电压调整范围 -10% , +10%
- 工业标准引脚
- Fully SMT 制造
- 标准品，交期好，性价比高

UVLO

OCP

OVP

OTP

# DC/DC产品介绍

## Model Number Structure

ESBS 024W 050 - S - P - F 30

Series Name	Input Voltage (VDC)	Output Voltage (VDC)	Output Quantity	Remote Control Option	Shape	Watt
Evolving Sirius- Bishop series – Second	024W : 9-36 048W : 18-75 110 : 40-160	050 : 5	S : Single	P : Positive logic N : Negative logic	F : Flat	30
		120 : 12				
		150 : 15				
		120 : ±12	D : Dual			
		150 : ±15				

Typical @ Ta=+25 °C under nominal line voltage conditions unless noted

Model	Input			Output			Efficiency
	Voltage (V)		Current (A)	Voltage	Current	Power	
	Range	Nominal	Full load	(V)	(A)	(W)	Typ.(%)
ESBS024W050-S-□-F30	9-36	24	1.42	5	6	30	88%
ESBS024W120-S-□-F30	9-36	24	1.42	12	2.5	30	88%
ESBS024W150-S-□-F30	9-36	24	1.42	15	2	30	88%
ESBS024W120-D-□-F30	9-36	24	1.42	±12	±1.25	30	88%
ESBS024W150-D-□-F30	9-36	24	1.42	±15	±1	30	88%
ESBS048W050-S-□-F30	18-75	48	0.71	5	6	30	88%
ESBS048W120-S-□-F30	18-75	48	0.71	12	2.5	30	88%
ESBS048W150-S-□-F30	18-75	48	0.71	15	2	30	88%
ESBS048W120-D-□-F30	18-75	48	0.71	±12	±1.25	30	88%
ESBS048W150-D-□-F30	18-75	48	0.71	±15	±1	30	88%
ESBS110050-S-□-F30	40-160	110	0.31	5	6	30	88%
ESBS110120-S-□-F30	40-160	110	0.31	12	2.5	30	88%
ESBS110150-S-□-F30	40-160	110	0.31	15	2	30	88%
ESBS110120-D-□-F30	40-160	110	0.31	±12	±1.25	30	88%
ESBS110150-D-□-F30	40-160	110	0.31	±15	±1	30	88%

# DC/DC产品介绍

## DC/DC 电源模块- S 系列

### ● ESCS



## 特色

- 内建EMI滤波器可通过 EN55032 Class A，无须外部零件 (视不同型号而定)
- 包含单 / 双路输出
- 5面全金属设计，散热及EMI佳
- 工作壳温: -40°C to +100°C
- 输出电压调整范围 -10% , +10%
- 工业标准引脚
- Fully SMT 制造
- 标准产品，交期好，性价比高

UVLO

OCP

OVP

OTP

# DC/DC产品介绍

## Model Number Structure

**ESCS 024W 050 - S - P - F 50**

Series Name	Input Voltage (VDC)	Output Voltage (VDC)	Output Quantity	Remote Control Option	Shape	Watt
Evolving Sirius- Chivalry series – Second	024W : 9-36 048W : 18-75 110 : 40-180	050 : 5	S : Single	P : Positive logic N : Negative logic	F : Flat	50
		120 : 12				
		150 : 15				
		120 : ±12	D : Dual			
		150 : ±15				

## Model Selection Guide

Typical @ Ta=+25 °C under nominal line voltage conditions unless noted

Model	Input			Output			Efficiency
	Voltage (V)		Current (A)	Voltage	Current	Power	
	Range	Nominal	Full load	(V)	(A)	(W)	Typ.(%)
ESCS024W050-S-□-F50	9-36	24	2.37	5	10	50	88%
ESCS024W120-S-□-F50	9-36	24	2.34	12	4.16	50	89%
ESCS024W150-S-□-F50	9-36	24	2.34	15	3.33	50	89%
ESCS024W120-D-□-F50	9-36	24	2.37	±12	±2.08	50	88%
ESCS024W150-D-□-F50	9-36	24	2.37	±15	±1.66	50	88%
ESCS048W050-S-□-F50	18-75	48	1.19	5	10	50	88%
ESCS048W120-S-□-F50	18-75	48	1.17	12	4.16	50	89%
ESCS048W150-S-□-F50	18-75	48	1.17	15	3.33	50	89%
ESCS048W120-D-□-F50	18-75	48	1.19	±12	±2.08	50	88%
ESCS048W150-D-□-F50	18-75	48	1.19	±15	±1.66	50	88%
ESCS110050-S-□-F50	40-180	110	0.52	5	10	50	88%
ESCS110120-S-□-F50	40-180	110	0.51	12	4.16	50	89%
ESCS110150-S-□-F50	40-180	110	0.51	15	3.33	50	89%
ESCS110120-D-□-F50	40-180	110	0.52	±12	±2.08	50	88%
ESCS110150-D-□-F50	40-180	110	0.52	±15	±1.66	50	88%





# 砖类模块

## 特色

- 内建EMI滤波器
- 6面全金属设计，散热及EMI佳
- 全陶瓷电容设计，可靠度佳
- 宽工作壳温:  $-45^{\circ}\text{C}$  to  $+105^{\circ}\text{C}$   
(亦提供工作壳温:  $-55^{\circ}\text{C}$  to  $+125^{\circ}\text{C}$  可选，视不同系列而定)
- 包含1/16砖、1/4砖、1/2砖、全砖
- 2:1 & 4:1 & 8:1 & 12:1 超宽输入电压  
(视不同系列而定)
- 输入范围涵盖各大品牌
- 输出电压调整范围  $-10\%$ ， $+10\%$
- DOSA脚位&VICOR脚位兼容 (可选)

# DC/DC产品介绍

## DC/DC电源模块-砖类 B系列

- STB



## 特色

- 内建EMI滤波器
- DOSA 脚位
- 2:1 / 4:1宽输入电压
- 内建EMI滤波器
- 6面全金属设计，散热及EMI佳
- 高可靠产品，采全陶瓷电容(MLCC)设计，不含钽质电容、电解电容
- 固定的开关速率有效将电磁干扰控制在固定的范围
- 输出电压调整范围-10% · +10%
- 输出电压远端感应
- 宽工作壳温:-45°C to +105°C
- 外壳: B : 平壳带法兰 / F : 平壳不带法兰 (可选)

UVLO

OCP

OVP

OTP

# DC/DC产品介绍

## Model Number Structure

**STB 018 033 - S - P - B 50**

Series Name	Input Voltage (VDC)	Output Voltage (VDC)	Pin out	Remote Control Option	Shape	Watt
-------------	---------------------	----------------------	---------	-----------------------	-------	------

Supreme series Sixteenth Brick	012 : 9-18	033 : 3.3	S : Dosa	P : Positive logic N : Negative logic	B : Base Plate F : No Flange	50
	018 : 9-36	050 : 5				
	024 : 18-36	120 : 12				
	036 : 18-75	150 : 15				
	048 : 36-75	240 : 24				

## Model Selection Guide

Typical @ Ta=+25 °C under nominal line voltage conditions unless noted

Model	Input			Output			Efficiency
	Voltage (V)		Current (A)	Voltage	Current	Power	
	Range	Nominal	Full load	(V)	(A)	(W)	Typ.(%)
STB018033-S-□-□50	9-36	18	3.16	3.3	15.1	50	88
STB018050-S-□-□50	9-36	18	3.09	5	10.0	50	90
STB018120-S-□-□50	9-36	18	3.12	12	4.2	50	89
STB018240-S-□-□50	9-36	18	3.12	24	2.1	50	89
STB024033-S-□-□50	18-36	24	2.34	3.3	15.1	50	89
STB024050-S-□-□50	18-36	24	2.29	5	10.0	50	91
STB024120-S-□-□50	18-36	24	2.31	12	4.2	50	90
STB036033-S-□-□50	18-75	36	1.58	3.3	15.1	50	88
STB036050-S-□-□50	18-75	36	1.54	5	10.0	50	90
STB036120-S-□-□50	18-75	36	1.56	12	4.2	50	89
STB036240-S-□-□50	18-75	36	1.56	24	2.1	50	89
STB048033-S-□-□50	36-75	48	1.17	3.3	15.1	50	89
STB048050-S-□-□50	36-75	48	1.14	5	10.0	50	91
STB048120-S-□-□50	36-75	48	1.16	12	4.2	50	90

# DC/DC产品介绍

## DC/DC电源模块-砖类 B系列

- MQB



## 特色

- 内建EMI滤波器
- DOSA 脚位
- 8:1 / 12:1 超宽输入电压
- 6面全金属设计，散热及EMI佳
- 高可靠产品，采全陶瓷电容 (MLCC)设计，不含钽质电容、电解电容
- 输出电压调整范围-10% , +10%
- 输入范围涵盖各大品牌
- 宽工作壳温:-45°C to +105°C
- 单 / 双 / 多组输出

UVLO

OCP

OVP

OTP

# DC/DC产品介绍

## Model Number Structure

**MQB 028 050 - S - P - B 75**

Series Name	Input Voltage (VDC)	Output Voltage (VDC)	Output Quantity	Remote Control Option	Shape	Watt
Mercury series	028 : 9-75	050 : 5	S : Single	P : Positive logic	B : Base Plate	50
		120 : 12				
Quarter Brick	054 : 14-154	150 : 15	D : Dual	N : Negative logic		75
		240 : 24				
		120 : ±12				
		150 : ±15				
		240 : ±24				

## Model Selection Guide

Typical @ Ta=+25 °C under nominal line voltage conditions unless noted

Model	Input			Output			Efficiency	Max. capacitive Load
	Voltage (V)		Current (A)	Voltage	Current	Power		
	Range	Nominal	Full load	(V)	(A)	(W)	Typ.(%)	uF
MQB028050-S-□-B50	9 - 75	28	1.98	5	10.0	50	90	18000
MQB028120-S-□-B50	9 - 75	28	2.01	12	4.2	50	89	5000
MQB028150-S-□-B50	9 - 75	28	2.01	15	3.3	50	89	3200
MQB028240-S-□-B50	9 - 75	28	2.01	24	2.1	50	89	1200
MQB028120-D-□-B50	9 - 75	28	2.01	±12	2.1	50	89	1000
MQB028150-D-□-B50	9 - 75	28	2.01	±15	1.7	50	89	500
MQB028240-D-□-B50	9 - 75	28	2.01	±24	1.0	50	89	200
MQB028050-S-□-B75	9 - 75	28	3.01	5	15	75	89	18000
MQB028120-S-□-B75	9 - 75	28	3.04	12	6.25	75	88	5000
MQB028150-S-□-B75	9 - 75	28	3.04	15	5	75	88	3200
MQB028240-S-□-B75	9 - 75	28	3.04	24	3.125	75	88	1200
MQB028120-D-□-B75	9 - 75	28	3.04	±12	3.13	75	88	1000
MQB028150-D-□-B75	9 - 75	28	3.04	±15	2.5	75	88	500
MQB028240-D-□-B75	9 - 75	28	3.04	±24	1.56	75	88	200
MQB054050-S-□-B50	14 - 154	54	1.03	5	10.0	50	90	18000
MQB054120-S-□-B50	14 - 154	54	1.04	12	4.2	50	89	5000
MQB054150-S-□-B50	14 - 154	54	1.04	15	3.3	50	89	3200
MQB054240-S-□-B50	14 - 154	54	1.04	24	2.1	50	89	1200

# DC/DC产品介绍

Typical @ Ta=+25 °C under nominal line voltage conditions unless noted

Model	Input			Output			Efficiency	Max. capacitive Load
	Voltage (V)		Current (A)	Voltage	Current	Power		
	Range	Nominal	Full load	(V)	(A)	(W)	Typ.(%)	uF
MQB054120-D-□-B50	14 - 154	54	1.04	±12	2.1	50	89	1000
MQB054150-D-□-B50	14 - 154	54	1.04	±15	1.7	50	89	500
MQB054240-D-□-B50	14 - 154	54	1.04	±24	1.0	50	89	200
MQB054050-S-□-B75	14 - 154	54	1.56	5	15	75	89	18000
MQB054120-S-□-B75	14 - 154	54	1.58	12	6.25	75	88	5000
MQB054150-S-□-B75	14 - 154	54	1.58	15	5	75	88	3200
MQB054240-S-□-B75	14 - 154	54	1.58	24	3.125	75	88	1200
MQB054120-D-□-B75	14 - 154	54	1.58	±12	3.13	75	88	1000
MQB054150-D-□-B75	14 - 154	54	1.58	±15	2.5	75	88	500
MQB054240-D-□-B75	14 - 154	54	1.58	±24	1.56	75	88	200



# DC/DC产品介绍

## DC/DC电源模块-砖类 B系列

### ● SQB



## 特色

- 内建EMI滤波器
- DOSA脚位&VICOR脚位兼容 (可选)
- 6面全金属设计，散热及EMI佳
- 2:1 / 4:1 宽输入电压
- 高可靠产品，采全陶瓷电容(MLCC)设计，不含钽质电容、电解电容
- 输入范围涵盖各大品牌
- 输出电压调整范围-10%，+10%
- 工作壳温:-45°C to +105°C  
(亦提供工作壳温:-55°C to + 125°C可选)

UVLO

OCP

OVP

OTP

# DC/DC产品介绍

## Model Number Structure

**SQB 110 120 - S - P - B 150**

Series Name	Input Voltage (VDC)	Output Voltage (VDC)	Pin out	Remote Control Option	Shape	Watt
Supreme series Quarter Brick	018 : 9-36	050 : 5	S : Dosa V : Vicor	P : Positive logic N : Negative logic	B : Base Plate F : No Flange	150
	024 : 18-36	120 : 12				
	036 : 18-75	240 : 24				
	110 : 40-180	280 : 28				
	300 : 180-425	480 : 48				

## Model Selection Guide

Typical @ Ta=+25 °C under nominal line voltage conditions unless noted

Model	Input			Output			Efficiency
	Voltage (V)		Current (A)	Voltage	Current	Power	
	Range	Nominal	Full load	(V)	(A)	(W)	Typ.(%)
SQB018050-□-□-□150	9-36	18	9.80	5	30	150	85
SQB018120-□-□-□150	9-36	18	9.58	12	12.5	150	87
SQB018240-□-□-□150	9-36	18	9.69	24	6.25	150	86
SQB018280-□-□-□150	9-36	18	9.80	28	5.36	150	85
SQB018480-□-□-□150	9-36	18	9.92	48	3.16	150	84
SQB024050-□-□-□150	18-36	24	7.02	5	30	150	89
SQB024120-□-□-□150	18-36	24	6.94	12	12.5	150	90
SQB024240-□-□-□150	18-36	24	6.87	24	6.25	150	91
SQB024280-□-□-□150	18-36	24	6.79	28	5.36	150	92
SQB024480-□-□-□150	18-36	24	6.87	48	3.16	150	91
SQB036050-□-□-□150	18-75	36	4.68	5	30	150	89
SQB036120-□-□-□150	18-75	36	4.68	12	12.5	150	89
SQB036240-□-□-□150	18-75	36	4.68	24	6.25	150	89
SQB036280-□-□-□150	18-75	36	4.68	28	5.36	150	89
SQB036480-□-□-□150	18-75	36	4.68	48	3.16	150	89

# DC/DC产品介绍

Typical @ Ta=+25 °C under nominal line voltage conditions unless noted

Model	Input			Output			Efficiency
	Voltage (V)		Current (A)	Voltage	Current	Power	
	Range	Nominal	Full load	(V)	(A)	(W)	Typ.(%)
SQB110050-□-□-□150	40-180	110	1.53	5	30	150	89
SQB110120-□-□-□150	40-180	110	1.53	12	12.5	150	89
SQB110240-□-□-□150	40-180	110	1.53	24	6.25	150	89
SQB110280-□-□-□150	40-180	110	1.53	28	5.36	150	89
SQB110480-□-□-□150	40-180	110	1.53	48	3.16	150	89
SQB300050-□-□-□150	180-425	300	0.59	5	30	150	85
SQB300120-□-□-□150	180-425	300	0.57	12	12.5	150	87
SQB300240-□-□-□150	180-425	300	0.57	24	6.25	150	88
SQB300280-□-□-□150	180-425	300	0.57	28	5.36	150	88
SQB300480-□-□-□150	180-425	300	0.57	48	3.16	150	88

# DC/DC产品介绍

## DC/DC电源模块-砖类 B系列

- SHB



## 特色

- 内建EMI滤波器
- DOSA脚位&VICOR脚位兼容 (可选)
- 6面全金属设计，散热及EMI佳
- 2:1 / 4:1 宽输入电压
- 高可靠产品，采全陶瓷电容(MLCC)设计，不含钽质电容、电解电容
- 输入范围涵盖各大品牌
- 输出电压调整范围-10% · +10%
- 工作亮温:-45°C to +105°C  
(亦提供工作亮温:-55°C to + 125°C可选)

UVLO

OCP

OVP

OTP

# DC/DC产品介绍

## Model Number Structure

**SHB 110 120 - S - P - B 300**

Series Name	Input Voltage (VDC)	Output Voltage (VDC)	Pin out	Remote Control Option	Shape	Watt
Supreme series Half Brick	018 : 9-36	050 : 5	S : Dosa V : Vicor	P : Positive logic N : Negative logic	B : Base Plate	200 300
	024 : 18-36	120 : 12				
	036 : 18-75	240 : 24				
	110 : 40-180	280 : 28				
	300 : 180-425	480 : 48				

## Model Selection Guide

Typical @ Ta=+25 °C under nominal line voltage conditions unless noted

Model	Input			Output			Efficiency
	Voltage (V)		Current (A)	Voltage	Current	Power	
	Range	Nominal	Full load	(V)	(A)	(W)	Typ.(%)
SHB018050-□-□-B200	9-36	18	12.63	5	40	200	88
SHB018120-□-□-B200	9-36	18	12.35	12	16.67	200	90
SHB018240-□-□-B200	9-36	18	12.35	24	8.33	200	90
SHB018280-□-□-B200	9-36	18	12.35	28	7.14	200	90
SHB018480-□-□-B200	9-36	18	12.35	48	4.17	200	90
SHB018120-□-□-B300	9-36	18	12.48	12	25	300	89
SHB018240-□-□-B300	9-36	18	12.48	24	12.5	300	89
SHB018280-□-□-B300	9-36	18	12.48	28	10.71	300	88
SHB018480-□-□-B300	9-36	18	12.48	48	6.25	300	88
SHB024050-□-□-B200	18-36	24	9.26	5	40	200	90
SHB024120-□-□-B200	18-36	24	9.26	12	16.67	200	90
SHB024240-□-□-B200	18-36	24	9.26	24	8.33	200	90
SHB024280-□-□-B200	18-36	24	9.26	28	7.14	200	90
SHB024480-□-□-B200	18-36	24	9.26	48	4.17	200	90
SHB024120-□-□-B300	18-36	24	13.89	12	25	300	90
SHB024240-□-□-B300	18-36	24	13.89	24	12.5	300	90
SHB024280-□-□-B300	18-36	24	13.89	28	10.71	300	90
SHB024480-□-□-B300	18-36	24	13.89	48	6.25	300	90

# DC/DC产品介绍

Typical @ Ta=+25 °C under nominal line voltage conditions unless noted

Model	Input			Output			Efficiency
	Voltage (V)		Current (A)	Voltage	Current	Power	
	Range	Nominal	Full load	(V)	(A)	(W)	Typ.(%)
SHB036050-□-□-B200	18-75	36	6.31	5	40	200	88
SHB036120-□-□-B200	18-75	36	6.17	12	16.67	200	90
SHB036240-□-□-B200	18-75	36	6.17	24	8.33	200	90
SHB036280-□-□-B200	18-75	36	6.17	28	7.14	200	90
SHB036480-□-□-B200	18-75	36	6.17	48	4.17	200	90
SHB036120-□-□-B300	18-75	36	9.47	12	25	300	88
SHB036240-□-□-B300	18-75	36	9.47	24	12.5	300	88
SHB036280-□-□-B300	18-75	36	9.47	28	10.71	300	88
SHB036480-□-□-B300	18-75	36	9.47	48	6.25	300	88
SHB110050-□-□-B200	40-180	110	2.07	5	40	200	88
SHB110120-□-□-B200	40-180	110	2.02	12	16.67	200	90
SHB110240-□-□-B200	40-180	110	2.02	24	8.33	200	90
SHB110280-□-□-B200	40-180	110	2.02	28	7.14	200	90
SHB110480-□-□-B200	40-180	110	2.02	48	4.17	200	90
SHB110120-□-□-B300	40-180	110	3.10	12	25	300	88
SHB110240-□-□-B300	40-180	110	3.10	24	12.5	300	88
SHB110280-□-□-B300	40-180	110	3.10	28	10.71	300	88
SHB110480-□-□-B300	40-180	110	3.10	48	6.25	300	88
SHB300050-□-□-B200	180-425	300	0.75	5	40	200	89
SHB300120-□-□-B200	180-425	300	0.74	12	16.67	200	90
SHB300240-□-□-B200	180-425	300	0.74	24	8.33	200	90
SHB300280-□-□-B200	180-425	300	0.74	28	7.14	200	90
SHB300480-□-□-B200	180-425	300	0.74	48	4.17	200	90
SHB300120-□-□-B300	180-425	300	1.14	12	25	300	88
SHB300240-□-□-B300	180-425	300	1.14	24	12.5	300	88
SHB300280-□-□-B300	180-425	300	1.12	28	10.71	300	89
SHB300480-□-□-B300	180-425	300	1.12	48	6.25	300	89



# DC/DC产品介绍

## DC/DC电源模块-砖类 B系列

- SFB



## 特色

- 内建EMI滤波器
- VICOR脚位兼容
- 6面全金属设计，散热及EMI佳
- 2:1 / 4:1 宽输入电压
- 高可靠产品，采全陶瓷电容(MLCC)设计，不含钽质容、电解电容
- 提供并联输出功能(可选)
- 输入范围涵盖各大品牌
- 输出电压调整范围-10% · +10%
- 工作壳温:-45°C to +105°C  
(亦提供工作壳温:-55°C to + 125°C 可选)

UVLO

OCP

OVP

OTP

# DC/DC产品介绍

## Model Number Structure

**SFB 110 120 - V - P - B 600**

Series Name	Input Voltage (VDC)	Output Voltage (VDC)	Pin out	Remote Control Option	Shape	Watt
Supreme series Full Brick	018 : 9-36	120 : 12	V : Vicor	P : Positive logic N : Negative logic	B : Base Plate	400 600
	024 : 18-36	240 : 24				
	036 : 18-75	280 : 28				
	110 : 40-180	480 : 48				
	300 : 180-425					

## Model Selection Guide

Typical @ Ta=+25 °C under nominal line voltage conditions unless noted

Model	Input			Output			Efficiency
	Voltage (V)		Current (A)	Voltage	Current	Power	
	Range	Nominal	Full load	(V)	(A)	(W)	Typ.(%)
SFB018120-V-□-B400	9-36	18	25.25	12	33.33	400	88
SFB018240-V-□-B400	9-36	18	25.25	24	16.67	400	88
SFB018280-V-□-B400	9-36	18	25.25	28	14.28	400	88
SFB018480-V-□-B400	9-36	18	25.25	48	8.33	400	88
SFB024120-V-□-B600	18-36	24	28.09	12	50	600	89
SFB024240-V-□-B600	18-36	24	28.09	24	25	600	89
SFB024280-V-□-B600	18-36	24	28.09	28	21.42	600	89
SFB024480-V-□-B600	18-36	24	28.09	48	12.5	600	89
SFB036120-V-□-B600	18-75	36	18.94	12	50	600	88
SFB036240-V-□-B600	18-75	36	18.94	24	25	600	88
SFB036280-V-□-B600	18-75	36	18.94	28	21.42	600	88
SFB036480-V-□-B600	18-75	36	18.94	48	12.5	600	88
SFB110120-V-□-B600	40-180	110	6.20	12	50	600	88
SFB110240-V-□-B600	40-180	110	6.20	24	25	600	88
SFB110280-V-□-B600	40-180	110	6.20	28	21.42	600	88
SFB110480-V-□-B600	40-180	110	6.20	48	12.5	600	88
SFB300120-V-□-B600	180-425	300	2.25	12	50	600	89
SFB300240-V-□-B600	180-425	300	2.25	24	25	600	89
SFB300280-V-□-B600	180-425	300	2.25	28	21.42	600	89
SFB300480-V-□-B600	180-425	300	2.25	48	12.5	600	89

# DC/DC产品介绍

## DC/DC电源模块-砖类 S系列

- SQBS



## 特色

- 内建EMI滤波器
- DOSA脚位&VICOR脚位兼容 (可选)
- 6面全金属设计，散热及EMI佳
- 固定的开关速率有效将电磁干扰控制在固定的范围
- 宽工作亮温:-40°C to +100°C
- 2:1 / 4:1 宽输入电压
- 输出电压调整范围-10% , +10%
- Fully SMT 制造
- 标准品，交期好，性价比高
- 外壳: B : 蝶壳带法兰 / F : 平壳不带法兰 (可选)

UVLO

OCP

OVP

OTP

# DC/DC产品介绍

## Model Number Structure

**SQBS 110 120 - S - P - B 100**

Series Name	Input Voltage (VDC)	Output Voltage (VDC)	Pin out	Remote Control Option	Shape	Watt
Supreme series	<b>024W</b> : 9-36 <b>024</b> : 18-36	<b>050</b> : 5 <b>120</b> : 12	<b>S</b> : Dosa <b>V</b> : Vicor	<b>P</b> : Positive logic <b>N</b> : Negative logic	<b>B</b> : Base Plate <b>F</b> : No Flange	<b>50</b> <b>100</b>
Quarter Brick	<b>048W</b> : 18-75	<b>240</b> : 24 <b>280</b> : 28				
Second	<b>110</b> : 40-180 <b>300</b> : 180-425	<b>480</b> : 48				

## Model Selection Guide

Typical @ Ta=+25 °C under nominal line voltage conditions unless noted

Model	Input			Output			Efficiency
	Voltage (V)		Current (A)	Voltage	Current	Power	
	Range	Nominal	Full load	(V)	(A)	(W)	Typ.(%)
SQBS024W050-□-□-□50	9-36	24	2.37	5	10	50	88
SQBS024W120-□-□-□50	9-36	24	2.34	12	4.17	50	89
SQBS024W240-□-□-□50	9-36	24	2.34	24	2.08	50	89
SQBS024W280-□-□-□50	9-36	24	2.34	28	1.79	50	89
SQBS024W480-□-□-□50	9-36	24	2.34	48	1.04	50	89
SQBS024W050-□-□-□100	9-36	24	4.73	5	20	100	88
SQBS024W120-□-□-□100	9-36	24	4.68	12	8.4	100	89
SQBS024W240-□-□-□100	9-36	24	4.68	24	4.17	100	89
SQBS024W280-□-□-□100	9-36	24	4.68	28	3.57	100	89
SQBS024W480-□-□-□100	9-36	24	4.68	48	2.08	100	89
SQBS048W050-□-□-□50	18-75	48	1.18	5	10	50	88
SQBS048W120-□-□-□50	18-75	48	1.17	12	4.17	50	89
SQBS048W240-□-□-□50	18-75	48	1.17	24	2.08	50	89
SQBS048W280-□-□-□50	18-75	48	1.17	28	1.79	50	89
SQBS048W480-□-□-□50	18-75	48	1.17	48	1.04	50	89

# DC/DC产品介绍

Typical @ Ta=+25 °C under nominal line voltage conditions unless noted

Model	Input			Output			Efficiency
	Voltage (V)		Current (A)	Voltage	Current	Power	
	Range	Nominal	Full load	(V)	(A)	(W)	Typ.(%)
SQBS048W050-□-□-□100	18-75	48	2.37	5	20	100	88
SQBS048W120-□-□-□100	18-75	48	2.34	12	8.4	100	89
SQBS048W240-□-□-□100	18-75	48	2.34	24	4.17	100	89
SQBS048W280-□-□-□100	18-75	48	2.34	28	3.57	100	89
SQBS048W480-□-□-□100	18-75	48	2.34	48	2.08	100	89
SQBS110050-□-□-□50	40-180	110	0.52	5	10	50	88
SQBS110120-□-□-□50	40-180	110	0.51	12	4.17	50	89
SQBS110240-□-□-□50	40-180	110	0.51	24	2.08	50	89
SQBS110280-□-□-□50	40-180	110	0.51	28	1.79	50	89
SQBS110480-□-□-□50	40-180	110	0.51	48	1.04	50	89
SQBS110050-□-□-□100	40-180	110	1.02	5	20	100	88
SQBS110120-□-□-□100	40-180	110	1.02	12	8.4	100	89
SQBS110240-□-□-□100	40-180	110	1.02	24	4.17	100	89
SQBS110280-□-□-□100	40-180	110	1.02	28	3.57	100	89
SQBS110480-□-□-□100	40-180	110	1.02	48	2.08	100	89
SQBS300050-□-□-□50	180-425	300	0.19	5	10	50	88
SQBS300120-□-□-□50	180-425	300	0.19	12	4.17	50	89
SQBS300240-□-□-□50	180-425	300	0.19	24	2.08	50	89
SQBS300280-□-□-□50	180-425	300	0.19	28	1.79	50	89
SQBS300480-□-□-□50	180-425	300	0.19	48	1.04	50	89
SQBS300050-□-□-□100	180-425	300	0.37	5	20	100	88
SQBS300120-□-□-□100	180-425	300	0.37	12	8.4	100	89
SQBS300240-□-□-□100	180-425	300	0.37	24	4.17	100	89
SQBS300280-□-□-□100	180-425	300	0.37	28	3.57	100	89
SQBS300480-□-□-□100	180-425	300	0.37	48	2.08	100	89

# DC/DC产品介绍

## DC/DC电源模块-砖类 S系列

### ● SHBS



## 特色

- 内建EMI滤波器
- DOSA脚位&VICOR脚位兼容 (可选)
- 6面全金属设计，散热及EMI佳
- 固定的开关速率有效将电磁干扰控制在固定的范围
- 宽工作壳温:-40°C to +100°C
- 2:1 / 4:1 宽输入电压
- 输出电压调整范围-10% · +10%
- Fully SMT 制造
- 标准品，交期好，性价比高

UVLO

OCP

OVP

OTP



# DC/DC产品介绍

## Model Number Structure

**SHBS 110 120 - V - P - B 100**

Series Name	Input Voltage (VDC)	Output Voltage (VDC)	Pin out	Remote Control Option	Shape	Watt
Supreme series	<b>024W</b> : 9-36 <b>024</b> : 18-36	<b>050</b> : 5 <b>120</b> : 12	V : Vicor	P : Positive logic N : Negative logic	B : Base Plate	<b>50</b> <b>100</b>
Half Brick	<b>048W</b> : 18-75	<b>240</b> : 24				
Second	<b>110</b> : 40-180 <b>300</b> : 180-425	<b>280</b> : 28 <b>480</b> : 48				

## Model Selection Guide

Typical @ Ta=+25 °C under nominal line voltage conditions unless noted

Model	Input			Output			Efficiency
	Voltage (V)		Current (A)	Voltage (V)	Current (A)	Power (W)	
	Range	Nominal	Full load				Typ.(%)
SHBS024W050-V-□-B50	9-36	24	2.37	5	10	50	88
SHBS024W120-V-□-B50	9-36	24	2.34	12	4.17	50	89
SHBS024W240-V-□-B50	9-36	24	2.34	24	2.08	50	89
SHBS024W280-V-□-B50	9-36	24	2.34	28	1.79	50	89
SHBS024W480-V-□-B50	9-36	24	2.34	48	1.04	50	89
SHBS024W050-V-□-B100	9-36	24	4.73	5	20	100	88
SHBS024W120-V-□-B100	9-36	24	4.68	12	8.33	100	89
SHBS024W240-V-□-B100	9-36	24	4.68	24	4.17	100	89
SHBS024W280-V-□-B100	9-36	24	4.68	28	3.57	100	89
SHBS024W480-V-□-B100	9-36	24	4.68	48	2.08	100	89
SHBS024050-V-□-B50	18-36	24	2.37	5	10	50	88
SHBS024120-V-□-B50	18-36	24	2.34	12	4.17	50	89
SHBS024240-V-□-B50	18-36	24	2.34	24	2.08	50	89
SHBS024280-V-□-B50	18-36	24	2.34	28	1.79	50	89
SHBS024480-V-□-B50	18-36	24	2.34	48	1.04	50	89
SHBS024050-V-□-B100	18-36	24	4.73	5	20	100	88
SHBS024120-V-□-B100	18-36	24	4.68	12	8.33	100	89
SHBS024240-V-□-B100	18-36	24	4.68	24	4.17	100	89
SHBS024280-V-□-B100	18-36	24	4.68	28	3.57	100	89
SHBS024480-V-□-B100	18-36	24	4.68	48	2.08	100	89

# DC/DC产品介绍

Typical @ Ta=+25 °C under nominal line voltage conditions unless noted

Model	Input			Output			Efficiency
	Voltage (V)		Current (A)	Voltage	Current	Power	
	Range	Nominal	Full load	(V)	(A)	(W)	Typ.(%)
SHBS048W050-V-□-B50	18-75	48	1.18	5	10	50	88
SHBS048W120-V-□-B50	18-75	48	1.17	12	4.17	50	89
SHBS048W240-V-□-B50	18-75	48	1.17	24	2.08	50	89
SHBS048W280-V-□-B50	18-75	48	1.17	28	1.79	50	89
SHBS048W480-V-□-B50	18-75	48	1.17	48	1.04	50	89
SHBS048W050-V-□-B100	18-75	48	2.37	5	20	100	88
SHBS048W120-V-□-B100	18-75	48	2.34	12	8.33	100	89
SHBS048W240-V-□-B100	18-75	48	2.34	24	4.17	100	89
SHBS048W280-V-□-B100	18-75	48	2.34	28	3.57	100	89
SHBS048W480-V-□-B100	18-75	48	2.34	48	2.08	100	89
SHBS110050-V-□-B50	40-180	110	0.52	5	10	50	88
SHBS110120-V-□-B50	40-180	110	0.51	12	4.17	50	89
SHBS110240-V-□-B50	40-180	110	0.51	24	2.08	50	89
SHBS110280-V-□-B50	40-180	110	0.51	28	1.79	50	89
SHBS110480-V-□-B50	40-180	110	0.51	48	1.04	50	89
SHBS110050-V-□-B100	40-180	110	1.03	5	20	100	88
SHBS110120-V-□-B100	40-180	110	1.02	12	8.33	100	89
SHBS110240-V-□-B100	40-180	110	1.02	24	4.17	100	89
SHBS110280-V-□-B100	40-180	110	1.02	28	3.57	100	89
SHBS110480-V-□-B100	40-180	110	1.02	48	2.08	100	89
SHBS300050-V-□-B50	180-425	300	0.19	5	10	50	88
SHBS300120-V-□-B50	180-425	300	0.19	12	4.17	50	89
SHBS300240-V-□-B50	180-425	300	0.19	24	2.08	50	89
SHBS300280-V-□-B50	180-425	300	0.19	28	1.79	50	89
SHBS300480-V-□-B50	180-425	300	0.19	48	1.04	50	89
SHBS300050-V-□-B100	180-425	300	0.38	5	20	100	88
SHBS300120-V-□-B100	180-425	300	0.37	12	8.33	100	89
SHBS300240-V-□-B100	180-425	300	0.37	24	4.17	100	89
SHBS300280-V-□-B100	180-425	300	0.37	28	3.57	100	89
SHBS300480-V-□-B100	180-425	300	0.37	48	2.08	100	89

世模科技股份有限公司

地址：42881台湾台中市大雅区科雅路40号5楼

官网：[www.powergood.com](http://www.powergood.com)

邮箱：[sales1@powergood.com](mailto:sales1@powergood.com)

