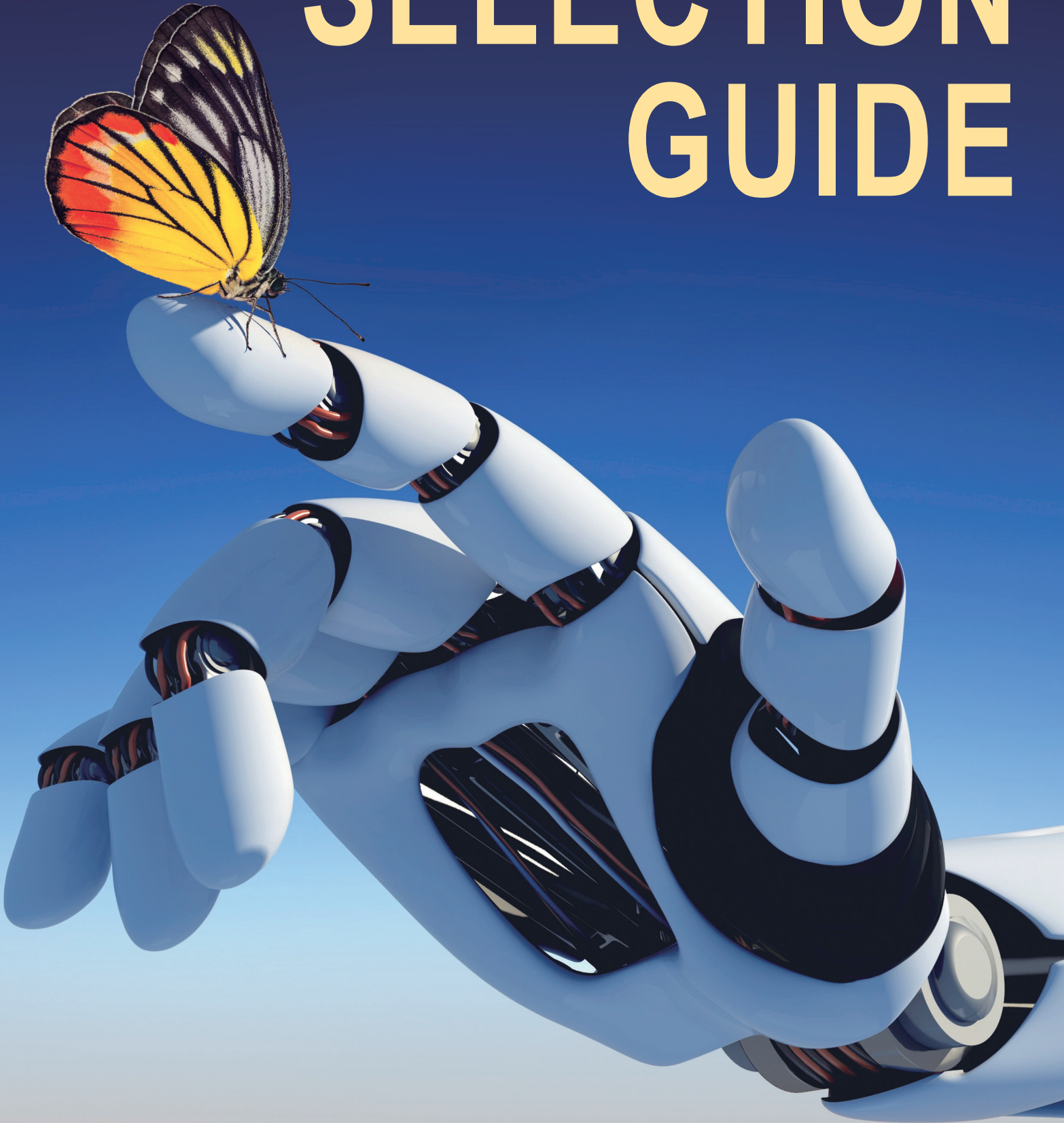


SELECTION GUIDE



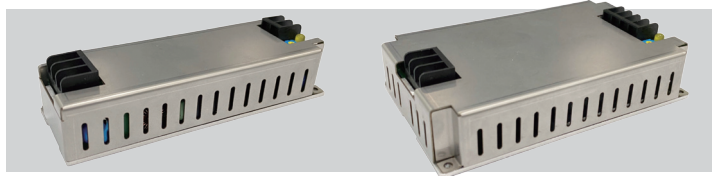
AC to DC Encapsulated Bricks



Series	ACE25 / ACE30	ACE60	ACQ100	ACH250	ACF700
Features	<ul style="list-style-type: none"> 2"X1" compact size 50W / 60W Peak load Capability Easy Hold-up time extension Low No Load Power Consumption<0.3W Low leakage current 100µA ±10% Output Trimming Function OCP OVP OTP SCP	<ul style="list-style-type: none"> 2"X2" compact size 120W Peak load Capability Easy Hold-up time extension Low No Load Power Consumption<0.5W Low leakage current 100µA ±10% Output Trimming Function OCP OVP OTP SCP	<ul style="list-style-type: none"> Quarter Brick size No aluminum and tantalum electrolytic capacitor inside for High Reliability Easy Hold-up time extension Baseplate cooled Built-in Active PFC OCP OVP OTP SCP	<ul style="list-style-type: none"> Half Brick size No aluminum and tantalum electrolytic capacitor inside for High Reliability Easy Hold-up time extension Remote On / Off (Optional) Built-in Active PFC OCP OVP OTP SCP	<ul style="list-style-type: none"> Full Brick size No aluminum and tantalum electrolytic capacitor inside for High Reliability Easy Hold-up time extension Built-in Active PFC Parallel function OCP OVP OTP SCP
Output Power (W)	25W / 30W	60W	150W	350W	700W
Input Voltage (VAC)	90 ~ 264	90 ~ 264	90 ~ 264	90 ~ 264	90 ~ 264
Output Voltage (VDC)	5, 12, 15, 24, 36, 48 / 5, ±12	5, 12, 15, 24, 36, 48	5, 12, 15, 19, 24, 28, 36, 48	12, 15, 19, 24, 28, 36, 48	12, 15, 24, 28, 36, 48
Efficiency	Up to 88%	Up to 90%	Up to 91%	Up to 91%	Up to 90%
Isolation	Up to 4000VAC	Up to 4000VAC	Up to 3000VAC	Up to 3000VAC	Up to 3000VAC
Dimension	2.10" x 1.10" x 0.96"	2.10" x 2.10" x 1.10"	2.36" x 1.57" x 0.50"	2.36" x 2.30" x 0.50"	4.62" x 2.40" x 0.50"
Case Temperature	-40°C ~ +80°C	-40°C ~ +80°C	-40°C ~ +100°C	-40°C ~ +100°C	-40°C ~ +100°C
Package	Plastic case	Plastic case	Aluminum base with plastic case	Aluminum base with plastic case	Aluminum base with plastic case
EMI	EN55032 Class B	EN55032 Class B	EN55032 Class B (with external filter)	EN55032 Class B (with external filter)	EN55032 Class B (with external filter)
Safety					
Warranty	2 Years	2 Years	3 Years	3 Years	3 Years

Applications ■ Wireless Network ■ Telecom / Data Communication ■ Industrial Control System
 ■ Semiconductor Equipment ■ Medical Application

AC to DC PSU



Series	ACO100	ACO250
Features	<ul style="list-style-type: none"> Quarter Brick module Built-in Built-in Radiator High Power Density Ratio Metal Baseplate & Cover Built-in Active PFC OCP OVP OTP SCP	<ul style="list-style-type: none"> Half Brick module Built-in Built-in Radiator High Power Density Ratio Metal Baseplate & Cover Built-in Active PFC OCP OVP OTP SCP
Output Power (W)	150W	350W
Input Voltage (VAC)	90 ~ 264	90 ~ 264
Output Voltage (VDC)	12, 15, 24, 28, 36, 48	12, 15, 24, 28, 36, 48
Efficiency	Up to 90%	Up to 91%
Isolation	Up to 3000VAC	Up to 3000VAC
Dimension	5.00" x 1.64" x 1.00"	5.00" x 3.00" x 1.00"
Case Temperature	-40°C ~ +85°C	-40°C ~ +85°C
Package	Metal case	Metal case
EMI	EN55032 Class B	EN55032 Class B
Safety		
Warranty	3 Years	3 Years

Applications ■ Wireless Network ■ Telecom / Data Communication ■ Industrial Control System
 ■ Semiconductor Equipment ■ Medical Application

Encapsulated-E Encapsulated-S



Series	ESB	ESC	ESAS	ESBS	ESCS
Features	<ul style="list-style-type: none"> Built-in EMI filter Wide range operating temperature Single / Dual Outputs +70°C without derating UVLO OCP OVP OTP	<ul style="list-style-type: none"> Built-in EMI filter Wide range operating temperature Single / Dual Outputs +70°C without derating UVLO OCP OVP OTP	<ul style="list-style-type: none"> Built-in PI filter Wide range operating temperature Single / Dual Outputs SMD optional +70°C without derating UVLO OCP OVP OTP	<ul style="list-style-type: none"> Built-in PI filter Wide range operating temperature Single / Dual Outputs +70°C without derating UVLO OCP OVP OTP	<ul style="list-style-type: none"> Built-in PI filter Wide range operating temperature Single / Dual Outputs +60°C without derating UVLO OCP OVP OTP
Output Power (W)	15W ~ 30W	20W ~ 50W	15W	20W ~ 50W	50W ~ 100W
Input Voltage (VDC)	9~18, 9~36, 18~36, 18~75, 36~75	9~18, 9~36, 18~36, 18~75, 36~75, 40~160	9~36, 18~75	9~36, 18~75	9~36, 18~75, 40~180
Output Voltage (VDC)	3.3, 5, 12, 15, 24, ±5, ±12, ±15, ±24	3.3, 5, 12, 15, 24, ±12, ±15, ±24	5, 12, 15, ±12, ±15	5, 12, 15, ±12, ±15	5, 12, 15, ±12, ±15
Efficiency	Up to 91%	Up to 90%	Up to 88%	Up to 88%	Up to 89%
Isolation	Up to 2250VDC	Up to 2250VDC	Up to 1600VDC	Up to 2000VDC	Up to 2000VDC
Dimension	1.6" x 1.0" x 0.4" (Flat) 1.6" x 1.0" x 0.5" (Heat sink embedded)	2.00" x 1.20" x 0.40" (Flat) 2.00" x 1.20" x 0.50" (Heat sink embedded) 2.03" x 1.68" x 0.46" (Baseplate)	1.27" x 0.65" x 0.40" (DIP 24) 1.27" x 0.65" x 0.40" (SMD 24)	1.00" x 1.00" x 0.40"	2.00" x 1.00" x 0.40"
Case Temperature	-45°C ~ +115°C -55°C ~ +125°C (Optional)	-45°C ~ +115°C -55°C ~ +125°C (Optional)	-40°C ~ +100°C	-40°C ~ +100°C	-40°C ~ +100°C
Package	Heat sink embedded & Flat	Heat sink embedded & Flat & Baseplate	DIP 24, SMD 24 (Metal or PVC)	Flat	Flat
EMI	EN55032 Class A & Class B	EN55032 Class A & Class B	EN55032 Class A	EN55032 Class A	EN55032 Class A
Safety					
Warranty	3 Years	3 Years	3 Years	3 Years	3 Years

Applications ■ Railway Application ■ Aviation Use ■ Wireless Network ■ Telecom / Data Communication

■ Industrial Control System ■ Semiconductor Equipment

Bricks-B



Series	STB (1 / 16 Brick compliant)	SQB (1/8 - 1/4 Brick compliant)	SHB (1 / 2 Brick compliant)	SFB (Full Brick)	MQB (1 / 4 Brick compliant)
Features	<ul style="list-style-type: none"> DOSA pin out Wide range operating temperature Ceramic Capacitor design Provides predictable EMI No minimum load requirement UVLO OCP OVP OTP	<ul style="list-style-type: none"> DOSA pin out / Vicor pin out Wide range operating temperature Ceramic Capacitor design Provides predictable EMI No minimum load requirement UVLO OCP OVP OTP	<ul style="list-style-type: none"> DOSA pin out / Vicor pin out Wide range operating temperature Ceramic Capacitor design Provides predictable EMI No minimum load requirement UVLO OCP OVP OTP	<ul style="list-style-type: none"> Vicor pin out Wide range operating temperature Ceramic Capacitor design Provides predictable EMI Optional parallel output UVLO OCP OVP OTP	<ul style="list-style-type: none"> DOSA pin out 8:1 & 12:1 Ultra-Wide input voltage Wide range operating temperature Single / Dual / Multi output Provides predictable EMI No minimum load requirement UVLO OCP OVP OTP
Output Power (W)	40W ~ 60W	100W ~ 150W	200W ~ 300W	400W ~ 600W	50W ~ 75W
Input Voltage (VDC)	9~18, 9~36, 18~36, 18~75, 36~75	9~36, 18~36, 18~75, 40~180, 180~425	9~36, 18~36, 18~75, 40~180, 180~425	9~36, 18~36, 18~75, 40~180, 180~425	9~75, 14~154
Output Voltage (VDC)	3.3, 5, 12, 15, 24	5, 12, 15, 24, 28, 48	5, 12, 15, 24, 28, 48	12, 15, 24, 28, 48	5, 12, 15, 24, ±12, ±15, ±24
Efficiency	Up to 91%	Up to 92%	Up to 92%	Up to 91%	Up to 90%
Isolation	Up to 2250VDC	Up to 2250VDC	Up to 2250VDC	Up to 2250VDC	Up to 2250VDC
Dimension	1.48" x 1.08" x 0.52" (Flat) 1.49" x 1.46" x 0.52" (Baseplate)	2.42" x 1.08" x 0.50" (1/8 Flat) 2.42" x 1.47" x 0.50" (1/4 Baseplate)	2.42" x 2.40" x 0.59"	4.62" x 2.40" x 0.59"	2.36" x 1.57" x 0.49"
Case Temperature	-45°C ~ +105°C	-45°C ~ +105°C -55°C ~ +125°C (Optional)	-45°C ~ +105°C -55°C ~ +125°C (Optional)	-45°C ~ +105°C -55°C ~ +125°C (Optional)	-45°C ~ +105°C
Package	6-side baseplate & Flat	6-side baseplate & Flat	6-side baseplate	6-side baseplate	6-side baseplate
Safety					
Warranty	3 Years	3 Years	3 Years	3 Years	3 Years

Applications ■ Railway Application ■ Aviation Use ■ Wireless Network ■ Telecom / Data Communication

■ Industrial Control System ■ Semiconductor Equipment

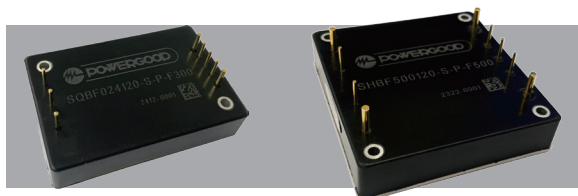
Bricks-S



Series	SQBS (1/8 - 1/4 Brick compliant)	SHBS (1/2 Brick compliant)	SFBS (Full Brick)
Features	<ul style="list-style-type: none"> ▪ DOSA pin out / Vicor pin out ▪ Wide range operating temperature ▪ Ceramic Capacitor design ▪ Provides predictable EMI ▪ No minimum load requirement UVLO OCP OVP OTP	<ul style="list-style-type: none"> ▪ Vicor pin out ▪ Wide range operating temperature ▪ Ceramic Capacitor design ▪ Provides predictable EMI ▪ No minimum load requirement UVLO OCP OVP OTP	<ul style="list-style-type: none"> ▪ Vicor pin out ▪ Wide range operating temperature ▪ Ceramic Capacitor design ▪ Provides predictable EMI UVLO OCP OVP OTP
Output Power (W)	50W ~ 100W	50W ~ 100W	50W ~ 200W
Input Voltage (VDC)	9-36, 18-36, 18-75, 40-180, 180-425	9-36, 18-36, 18-75, 40-180, 180-425	9-36, 18-36, 18-75, 40-180, 180-425
Output Voltage (VDC)	5, 12, 15, 24, 28, 48	5, 12, 15, 24, 28, 48	5, 12, 15, 24, 28, 48
Efficiency	Up to 89%	Up to 89%	Up to 89%
Isolation	Up to 2250VDC	Up to 2250VDC	Up to 2250VDC
Dimension	2.42"x 1.08"x 0.50" (1/8 Flat) 2.42"x 1.47"x 0.50" (1/4 Baseplate)	2.42"x 2.40"x 0.59"	4.62"x 2.40"x 0.59"
Case Temperature	-40°C ~ +100°C	-40°C ~ +100°C	-40°C ~ +100°C
Package	6-side baseplate & Flat	6-side baseplate	6-side baseplate
Safety			
Warranty	3 Years	3 Years	3 Years

Applications ▪ Railway Application ▪ Aviation Use ▪ Wireless Network ▪ Telecom / Data Communication
 ▪ Industrial Control System ▪ Semiconductor Equipment

Bricks-F



Series	SQBF (1/4 Brick compliant)	SHBF (1/2 Brick compliant)
Features	<ul style="list-style-type: none"> ▪ DOSA pin out ▪ Maximum Power Density Ratio ▪ Ceramic Capacitor design ▪ Provides predictable EMI ▪ No minimum load requirement UVLO OCP OVP OTP	<ul style="list-style-type: none"> ▪ DOSA pin out ▪ Maximum Power Density Ratio ▪ Ceramic Capacitor design ▪ Provides predictable EMI ▪ No minimum load requirement UVLO OCP OVP OTP
Output Power (W)	300W	600W
Input Voltage (VDC)	18-36, 18-75, 180-425	18-36, 36-75, 66-180, 180-425
Output Voltage (VDC)	12, 15, 24, 28, 48	12, 15, 24, 28, 48
Efficiency	Up to 93%	Up to 94%
Isolation	Up to 2250VDC	Up to 2250VDC
Dimension	2.40"x 1.60"x 0.50"	2.40"x 2.30"x 0.50"
Case Temperature	-45°C ~ +105°C	-45°C ~ +105°C
Package	Aluminum base with plastic case	Aluminum base with plastic case
Safety		
Warranty	3 Years	3 Years

Applications ▪ Railway Application ▪ Aviation Use ▪ Wireless Network ▪ Telecom / Data Communication
 ▪ Industrial Control System ▪ Semiconductor Equipment



POWERGOOD TECH. RESEARCH CO., LTD.

Address : 5F, No.40, Keya Rd., Daya Dist., Taichung City
42881, Taiwan

Website : www.powergood.com

E- mail : sales1@powergood.com

